

# CEMHER®

## GUIDE FOR METALLICS AND OXIDES

- **NATURAL METALLIC EFFECTS (Metalresin, Metalplus, Oximetal):**

Application by trowel directly on the substrate and subsequent polishing after complete drying (minimum consumption is 1 kg/m<sup>2</sup>).



BRONZE



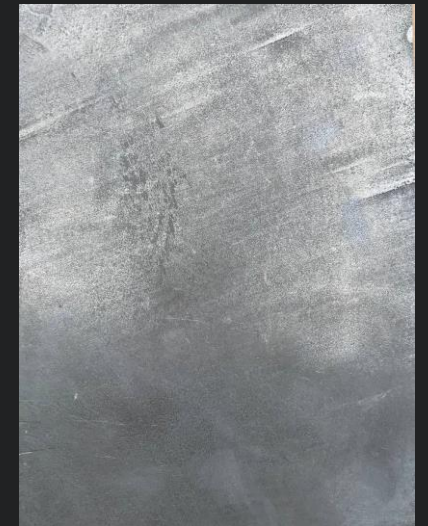
COPPER



OXIMETAL



GOLD



SILVER

Different finishes can be achieved by moderating the degree of polishing (to achieve the effect of a shiny metallic sheet it is necessary to apply the product with a minimum consumption of 2 kg/m<sup>2</sup>):



Lower polishing grade: subsequent polishing with roto-orbital sander starting with 120 grit, 400 and finishing with 800 grit.



Higher polishing grade: subsequent polishing with roto-orbital sander starting with 120 grit, 400 and finishing with 800 grit. For the final polishing with 800 grit high speed sander is required.



- **OXIDATION (Metalresin Copper/Bronze/Gold, Oximetal + Oxidher Activators):**

Application by trowel + oxidation (for a higher intensity of oxidation it is important to apply the activators on a dry surface: the drier the metallic coating is, the deeper the color of the oxidation will be. Drying takes about 4-6 hours depending on the thickness of the coating and the environmental conditions) + optional polishing after drying (in order to keep the intense oxide effect, we recommend not to polish the surface).

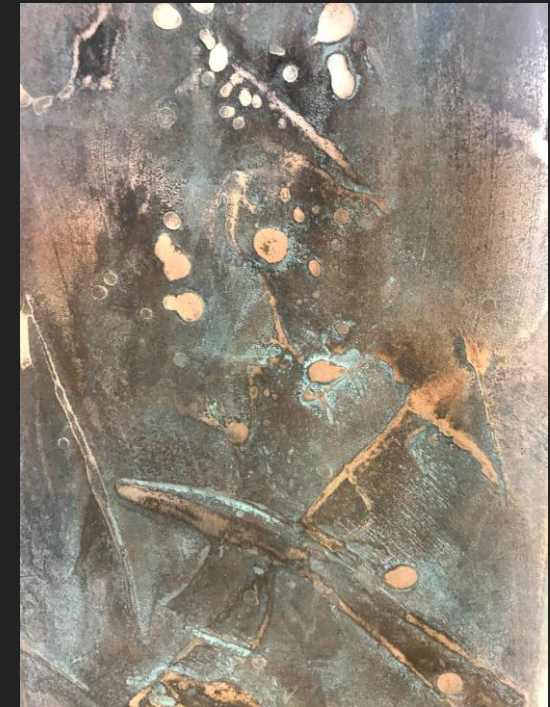
The recommended combinations are:



**BRONZE + NORDIC BLUE ACTIVATOR  
(WITH PARTIAL FINAL POLISHING)**



**COPPER + NORDIC BLUE ACTIVATOR  
(WITH PARTIAL FINAL POLISHING)**



**GOLD + NORDIC BLUE ACTIVATOR  
(WITH PARTIAL FINAL POLISHING)**

**NOTE:** all three finishes (Bronze/Copper/Gold) can be also oxidized with NORDIC GREEN ACTIVATOR with greenish blue finishing.





**OXIMETAL + RED ACTIVATOR**

**OXIMETAL + RED ACTIVATOR +  
BLUE NORDIC ACTIVATOR (APPLIED  
ON FRESH RED ACTIVATOR)**



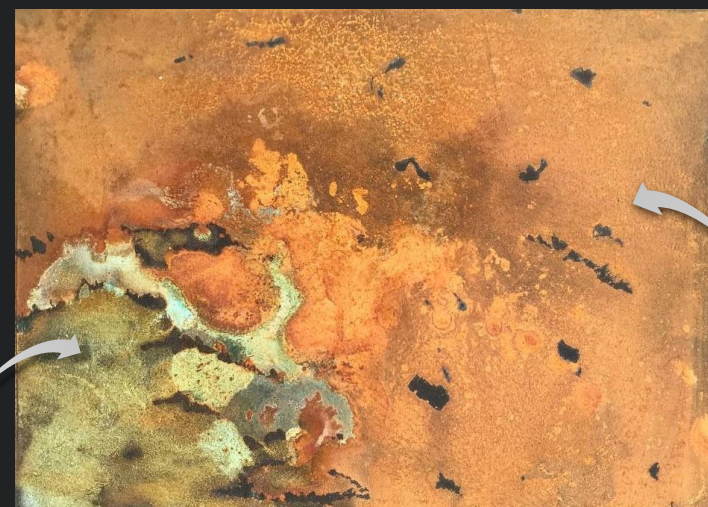
**OXIMETAL +  
RED ACTIVATOR**

**OXIMETAL + RED ACTIVATOR +  
BLUE NORDIC ACTIVATOR (APPLIED  
ON DRY RED ACTIVATOR)**



**OXIMETAL + RED ACTIVATOR +  
BLUE NORDIC ACTIVATOR (APPLIED  
ON FRESH RED ACTIVATOR)**

**OXIMETAL + RED ACTIVATOR  
OXIMETAL + BLUE NORDIC ACTIVATOR**



**AREAS WITH THE SAME MIX  
BUT WITH LESS QUANTITY OF  
RED ACTIVATOR**

**OXIMETAL + RED ACTIVATOR +  
BLUE NORDIC ACTIVATOR (APPLIED  
ON FRESH RED ACTIVATOR)**



**OXIMETAL + RED ACIVATOR  
+ BLUE NORDIC ACTIVATOR  
(APPLIED ON FRESH RED  
ACTIVATOR)**



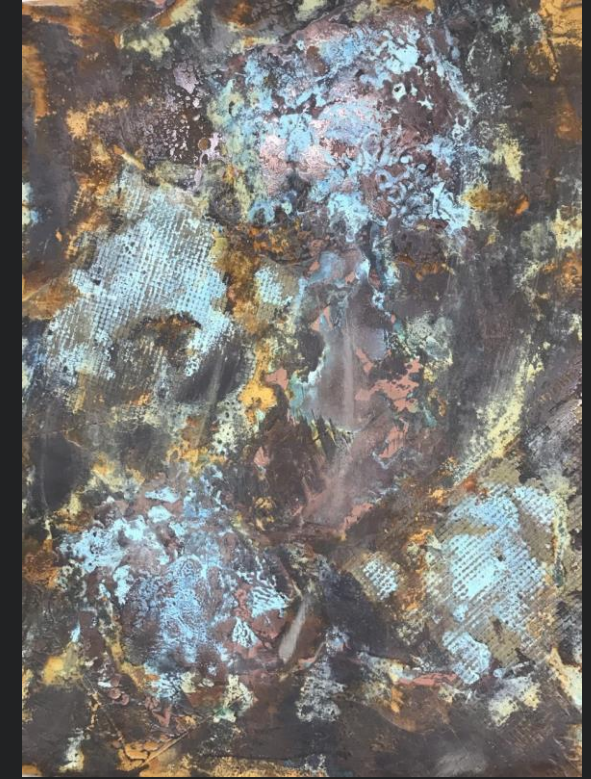
**OXIMETAL + RED ACTIVATOR**

**OXIMETAL + BLUE NORDIC ACTIVATOR**

**OXIMETAL + RED ACIVATOR  
+ BLUE NORDIC ACTIVATOR  
(APPLIED ON FRESH RED  
ACTIVATOR)**



**OXIMETAL + BLUE NORDIC ACTIVATOR**



**OXIMETAL + SMALL AREAS OF  
METALRESIN COPPER AND BRONZE +  
BLUE NORDIC ACTIVATOR + RED  
ACIVATOR**

**kilnher** group®

İTHALATÇI FİRMA

**MUP** 

**Mupo Yapı Pazarlama Ankastre İnşaat İthalat ve İhracat Ltd. Şti.**

Merkez : İzzet Paşa Yeniyol Caddesi No:3 Kat:32 No:3 Nurol Tower  
Şişli / İSTANBUL

Showroom : Ege Mahallesi Alparslan Türkeş Sokak Özsürücü Suit  
A Blok No:2-AC Kuşadası / AYDIN

[info@mupo.com.tr](mailto:info@mupo.com.tr)

[www.mupo.com.tr](http://www.mupo.com.tr)

0 256 614 7 444

C/ Llanterners 44 P. Ind. La Figuera 46970  
Alaquas - Valencia (Spain)