



# CEMHER<sup>®</sup>

- ORIGIN -

MICROCEMENT

---

STATE OF THE ART COATINGS



# #INDEX

12  
MICRODUO

16  
MICRODUR

22  
MICROLEVEL

26  
MICROPOOL

30  
MICRONE

34  
MICRORÖCK

38  
MICROFLEX

42  
MICROTADELAKT

46  
TONERS

52  
PRIMERS

56  
VAPOR BARRIER

60  
PORE SEALERS

64  
POLYURETHANES

70  
RETAIL DESIGN

78  
METALLICS AND OXIDES

88  
SELF-LEVELLING COATING

94  
EPOXI

98  
MAINTENANCE



"Architecture is not four walls and a roof, it is the space and the spirit generated within."

Lao Tzu.

What does a place need to have spirit?

When a space begins to be created it is dead, empty and lifeless. It needs something to become a space with soul, a space that stands out from the rest; a space that makes one feel.

A decorative coating, such as microcement, has the same meaning for a space as the foundations do for a building: the beginning! The beginning of a space that expresses, welcomes, excites, that has life.

Cemher is exactly this, it is THE ORIGIN.

It is the origin of idyllic places, yet to be created.

The whole universe comprises the brand is the perfect synergy to start creating spaces.

**And Cemher is your ally.**



# C

Manufacturing since 1940

# ONE OF THE MOST ESTABLISHED COMPANIES IN THE COUNTRY



**Transcending is our goal. To go beyond. That is what we seek with the creation of Cemher.**

Our experience (backed by the Kilnher Group) allows us to relaunch microcement from another dimension.

Until now, microcement has been a decorative coating plagued by technical problems and doubts about its application. It acquired a bad reputation caused by lack of knowledge and poor technical advice from some inexperienced companies.

With the arrival of Cemher, a microcement of superior quality resurfaces and with it, a technical substrate that provides the necessary solutions to possible unforeseen events. We have made an effort to solve all the technical problems that have arisen in the past and that have overshadowed this appreciated coating.

CEMHER is a reality thanks to our experience in the chemical sector and the experience gained over the years as manufacturers and suppliers for other microcement companies that commercialize it under their own brand. We consider this one of our added values, since our experience is superior to that of other companies in the sector.

This background and trajectory allow us to launch innovative products to the market that our competitors cannot offer. Improvement and innovative spirit are two of the components of our essence that best define us.

From here, our brand claim was born:

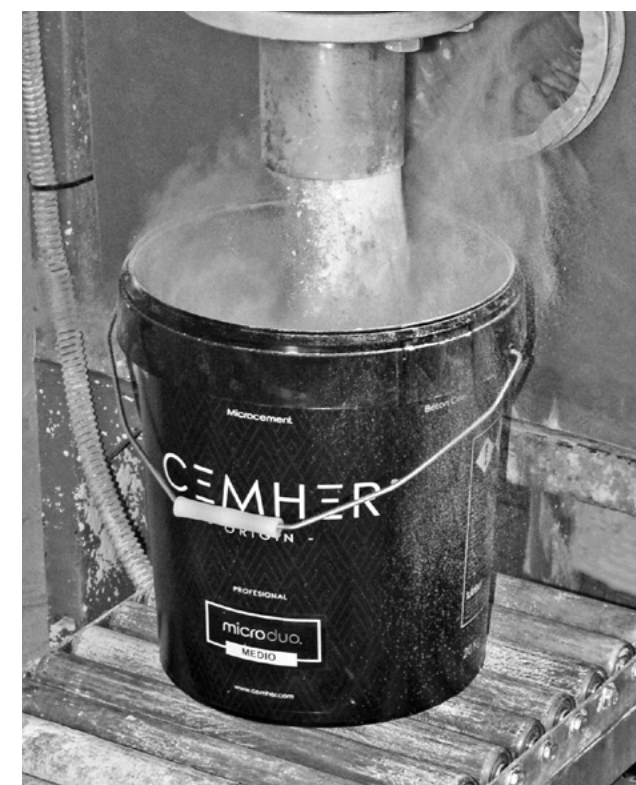
## “Origin”

Origen: from lat. origo, -inis.

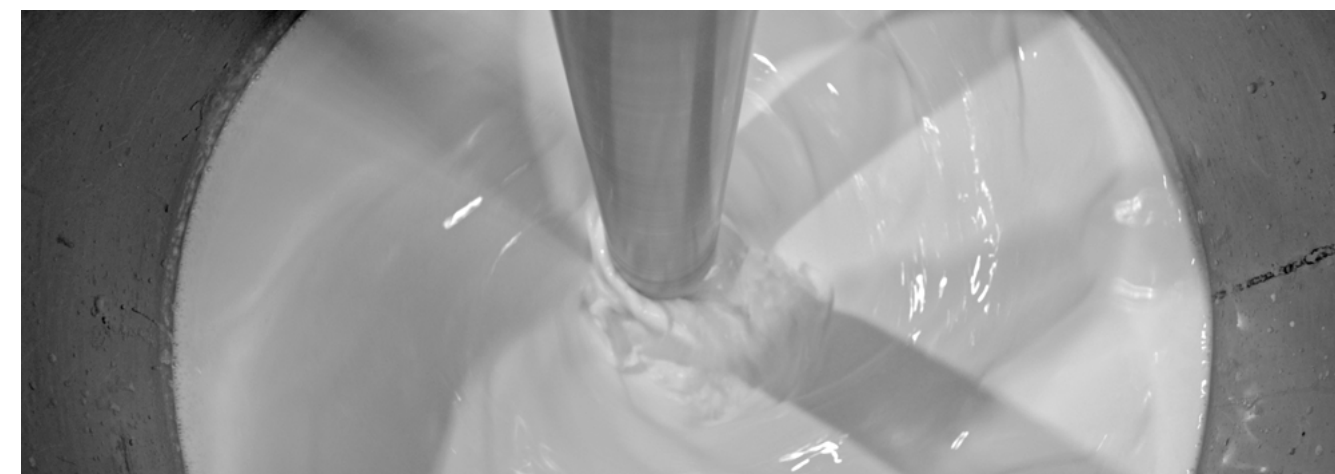
Principle, birth, source, root and cause of something.

Cemher is just that, the beginning. The origin of microcement manufacturers. In turn, microcement is the origin of a space that has yet to be created. All it takes is four empty walls and the microcement will transform that inert place into a space with soul.

Microcement is also the origin of your project. Bet on it and transcend its dimension.



From Cemher, as expert manufacturers of microcement, we advise professionals and private customers who are interested in this material, to be informed and be aware of the quality of the material to be purchased. A timely choice of the manufacturer is essential to achieve the expected final result.



**kilnher group.** C/Llanteners, 44 / Alaquàs, Valencia



# THE PERFECT UNION OF TECHNIQUE AND AESTHETICS

Its finishes are elegant and minimalist, creating (depending on the microcement chosen) very decorative marbling effects, capable of embellishing any space. In addition, microcement is a good companion to other materials such as wood; when combined to decorate walls or floors, they make any room very special.

# ABSOLUTE ADAPTABILITY

The flexibility and minimal thickness allow microcement to adapt to any type of surface: rough or smooth, horizontal or vertical. No preparation work is necessary, as microcement can be applied directly on to existing materials.



# INFINITE ELEGANCE

Why do we say infinite? Unlike other materials, microcement does not need expansion joints, so the result is a continuous and unlimited pavement or coating.

# NO LIMITS

Colours, textures, shapes, and different effects. Microcement has no limits when it comes to creating customized spaces.

Microcement is a decorative coating composed of a cementitious base mixed with polymers, fibers, resins, aerators, ultrafine aggregates and mineral pigments; it does not require expansion joints and has a thickness of 1 to 3 mm. This material is ideal for covering walls and floors without the need to remove the existing material.

- Ideal for modern and minimalist environments.
- Applicable on all types of surfaces: walls, floors, furniture, swimming pools.
- Continuous flooring (no joints required).
- Diversity of colours.
- Different finishes and textures.
- High resistance.
- Easy maintenance.

Microcement features:



Elasticity and flexibility



Fits any shape or geometry



Durable and robust



Adherence on all types of substrate



Continuous Joint-free



Fire-retardant



UV-resistant



Stain-resistant



Excellent chemical and mechanical resistance

Suitable for:



Furniture



Radiant floor heating



Indoors  
Outdoors

Adapting to each of the needs of the space in question is a priority for our brand; for this reason we distinguish 7 lines of microcement:

microduo

## THE TRADITION

The reflection of the union between tradition and innovation: that is Microduo. A new and innovative coating with which Cemher was born to transform the paradigm of decoration and minimalist architecture. After this launch, other variants of microcement with very specific characteristics emerged.

microdur

## THE TRUST

The same confidence that allows you to forget about constant caution at home and distract yourself from small everyday mishaps. All this is possible thanks to the high resistance of the Microdur line for floors and walls.

microlevel

## THE SAFETY

The risk appears with the likelihood of the problem turning into a disaster. With Microlevel, thanks to its tendency to self-levelling, you can be sure that the result on horizontal surfaces will meet expectations.

micropool

## THE ADAPTATION

Due to its high variability and capacity to adapt to any substrate, microcement can be used for a wide variety of applications. Micropool adapts perfectly to the conditions of the aquatic environment, while maintaining the main qualities of microcement.

microone

## THE SIMPLICITY

Often we want to avoid complex solutions in favor of simplicity. This sophisticated art of simplicity is hidden in Microne, a ready-to-use microcement. All you have to do is open it and apply it. Excellent for application in wet areas.

microröck

## THE STRENGTH

Strength is defined by its ability to withstand any kind of impact. Whether it's high traffic areas or knives falling on the kitchen floor, the Microröck line proves to be highly resistant to all kinds of external stresses on a daily basis.

microflex

## THE FLEXIBILITY

By flexibility we understand the willingness to bend easily. Without going any further, this is the great peculiarity of our microcement. That arises, given the need to be able to have a material that adapts easily without the structural movement of a surface or the appearance of cracks deteriorate it.





# microduo®

## - THE TRADITION -

### DUAL-COMPONENT MICROCEMENT

The Microduo line of microcement is characterized by the use of two components for hardening. The microcement powder must be mixed with the Resincem product, in the appropriate proportion, to provide the hardness and the ideal adherence to the system.

It stands out for its easy application and manoeuvrability with a trowel because its hardening time is very long.

### MICRODUO'S CHARACTERISTICS



More than 3h of  
product's pot life



High stucco effect

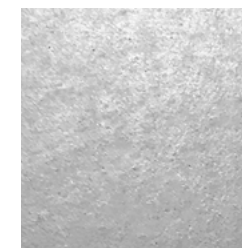
**30** MPa

Compressive strength

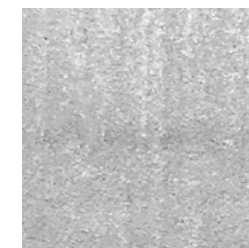
**2** Components

Resin + Powder

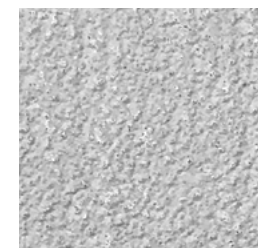
### GRANULOMETRIES



Fine



Medium



Base



## microduo<sup>®</sup> FINE

14 Microcement of fine texture finish. After adding the toner of the chosen colour you will obtain a smooth decorative surface with stucco effect. It is recommended only for vertical and non-trafficable surfaces, since it does not have non-slip properties.

Classified as CT-C30-F9 according to the UNE-EN 13813 standard.

Consumption: 0,5Kg/m<sup>2</sup>

Proportion: 10Kg of Microduo Fine + 5L of Resincem

Volume: 10Kg

Suitable for:



Vertical surfaces

Properties:



UNE EN 13813  
CT-C30-F9



## microduo<sup>®</sup> MEDIUM

Microduo Medium has thicker granulometry than Microduo Fine, which makes its finish more subtle (less stucco effect). After adding the toner of the chosen colour, the result will be a slightly textured surface, much more resistant and of superior hardness. The grain size provides it with anti-slip properties. It can be applied on a multitude of surfaces, however, its most recommended use is on medium traffic pavements. It can also be applied on Vertical surfaces or walls.

Classified as CT-C40-F10 according to the UNE-EN 13813 standard.

Consumption: 0,6Kg/m<sup>2</sup>

Proportion: 20Kg of Microduo Medium + 8L of Resincem

Volume: 20Kg

Suitable for:



Vertical surfaces



Floors



UNE EN 13813  
CT-C40-F10



Antislip



## microduo<sup>®</sup> BASE

Microcement that is used as a previous step to Microduo Fine or Microduo Medium. However, it can also be applied as a single step so that the same base acts as the finishing layer. The result will be a much rougher surface, without any stucco effect and with a high anti-slip power. By adding the toner of the chosen colour you will obtain a decorative finish, with a high planimetry that allows the product to match very well on horizontal surfaces. It is recommended for pavements and extreme traffic floors. It can also be applied on Vertical surfaces or walls.

Classified as CT-C40-F10 according to the UNE-EN 13813 standard.

Consumption: 1Kg/m<sup>2</sup>

Proportion: 20Kg of Microduo Base + 5L of Resincem

Volume: 20Kg

Suitable for:



Vertical surfaces



Floors



UNE EN 13813  
CT-C40-F10



Antislip



## RESINCEM

15 Resincem is a special resin for two-component microcement systems (Microduo). Mixed in the right proportion, it provides excellent compatibility, hardness and adhesion to microcement systems and mortars.

Volume: 5L, 8L, 10L and 25L



# microdur<sup>®</sup>

## - THE TRUST -

### SINGLE-COMPONENT MICROCEMENT

The Microdur line of microcement is characterized by being a single-component coating. It only needs to be mixed with water for hardening. The main difference with respect to those that are combined with resin (Microduo) is that its hardening time is not as long. However, mixing with water and not with resin makes it simpler to apply.

Microdur allows you to achieve a very high thicknesses without the risk of cracking, thanks to its high hardening. With a large amount of product, it is possible to get different textures and even cast shapes and forms with molds.

16 This line is also characterized by being the only one that allows textured coatings, such as, for example, the famous concrete formwork effect.

### MICRODUR'S CHARACTERISTICS



2 h of product's pot life



Stucco effect

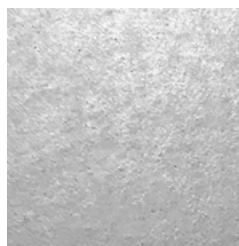
40 MPa

Compressive strength

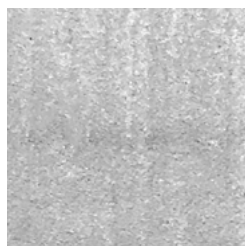
1 Component

Water + Powder

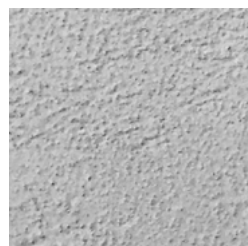
### GRANULOMETRIES



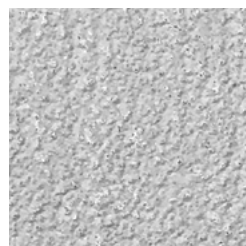
Fine



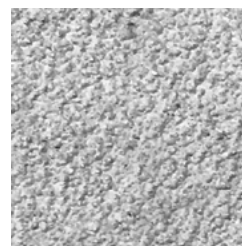
Medium



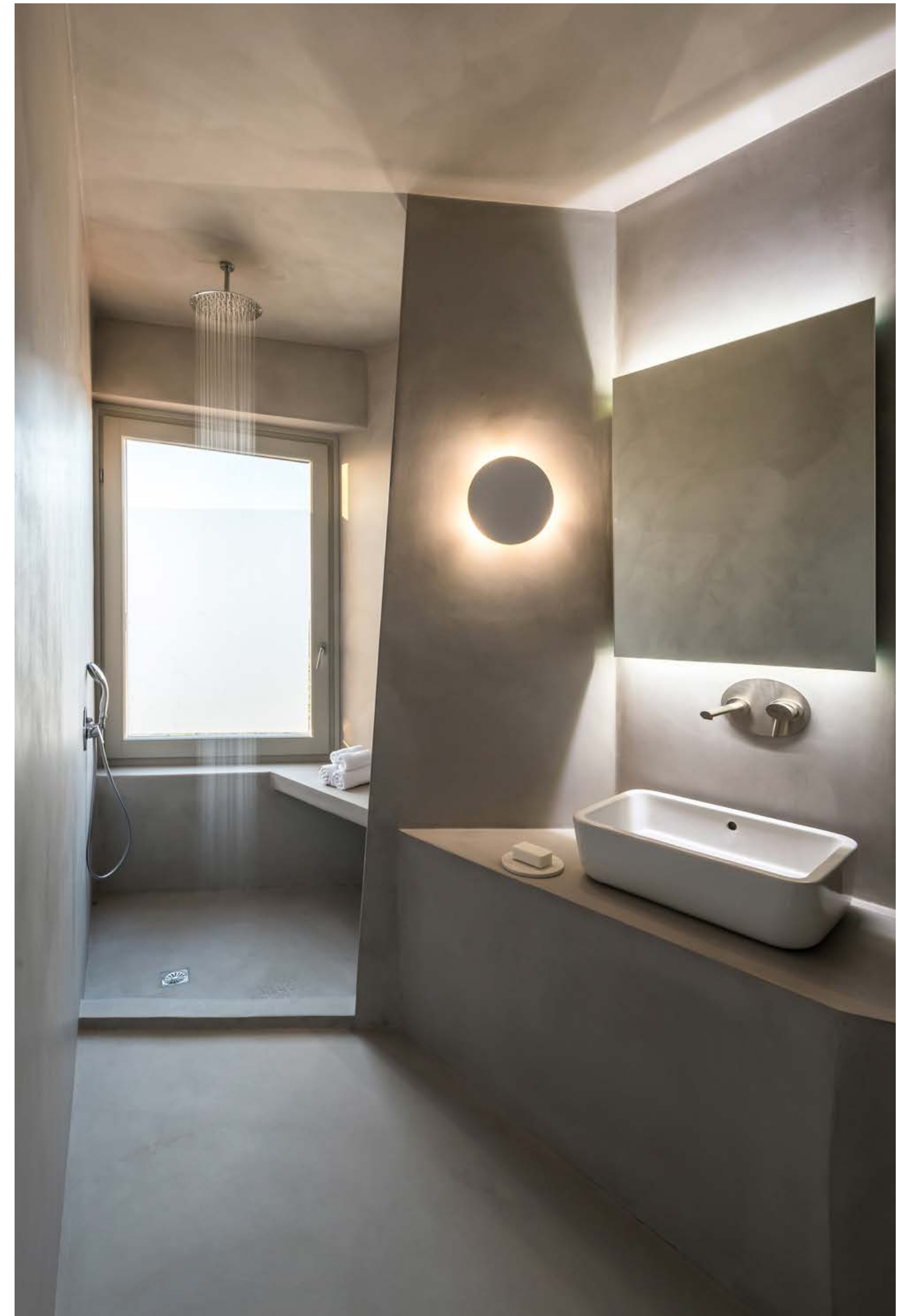
Fine Base



Base



Thick Base





## microdur. FINE

18 Microcement of fine texture finish. After adding the toner of the chosen colour you will obtain a smooth decorative surface with stucco effect. It is recommended only for vertical and non-trafficable surfaces, since it does not have non-slip properties.

Classified as CT-C30-F9 according to the UNE-EN 13813 standard.

Consumption: 0,5Kg/m<sup>2</sup>

Proportion: 10Kg of Microdur Fine + 4L of water

Volume: 10Kg

Suitable for:



Vertical surfaces

Properties:



UNE EN 13813 CT-C30-F9



## microdur. REGULAR

Microcement with an intermediate finish, between Fine and Medium. It achieves a more subtle finish (less stucco effect than Fine). After adding the toner of the chosen colour, the result will be a slightly textured surface, much more resistant and of superior hardness. The grain size provides it with anti-slip properties. It can be applied on a multitude of surfaces, however, its most recommended use is on medium traffic pavements. It can also be applied on Vertical surfaces or walls.

Classified as CT-C40-F10 according to the UNE-EN 13813 standard.

Consumption: 0,6Kg/m<sup>2</sup>

Proportion: 10Kg of Microdur Regular + 4L of water.

Volume: 10Kg

Suitable for:



Vertical surfaces



Floors



UNE EN 13813 CT-C40-F10

Properties:



## microdur. MEDIUM

Microdur Medium has thicker granulometry than Microdur Regular, which makes its finish more rustic. After adding the toner of the chosen colour, the result will be a slightly textured surface, much more resistant and of superior hardness. The grain size provides it with anti-slip properties. It can be applied on a multitude of surfaces, however, its most recommended use is on medium traffic pavements. It can also be applied on Vertical surfaces or walls.

Classified as CT-C40-F10 according to the UNE-EN 13813 standard.

Consumption: 0,6Kg/m<sup>2</sup>

Proportion: 20Kg of Microdur Medium + 6,5L of water

Volume: 20Kg

Suitable for:



Vertical surfaces



Floors



UNE EN 13813 CT-C40-F10



Antislip

Properties:



## microdur. FINE BASE

19 Low roughness microcement. After adding the toner of the chosen colour you will get a decorative finish with a very good planimetry on horizontal surfaces. It stands out for having a greater anti-slip power and for being more resistant and harder than the Medium and Fine. It is recommended for pavements and high traffic floors. It can also be applied on Vertical surfaces or walls. It can also be used as a base when a base of smaller granulometry is desired.

Classified as CT-C40-F10 according to the UNE-EN 13813 standard.

Consumption: 1Kg/m<sup>2</sup>

Proportion: 20Kg of Microdur Fine Base + 6L of water

Volume: 20Kg

Suitable for:



Vertical surfaces



Floors



UNE EN 13813 CT-C40-F10



Antislip

Properties:





## microdur<sup>®</sup> BASE

20 Microcement with a roughness, strength and hardness superior to Fine Base. Without Stucco effect. It stands out for its high anti-slip power. After adding the toner of the chosen colour we will obtain a rough decorative finish, with a high planimetry that will allow the product to match very well on horizontal surfaces. It is recommended for horizontal surfaces and extreme traffic floors. It can also be applied on Vertical surfaces or walls. It can be used when a base of intermediate granulometry is desired, between Microdur Thick Base and Microdur Fine Base.

Classified as CT-C40-F10 according to the UNE-EN 13813 standard.

Consumption: 1Kg/m<sup>2</sup>

Proportion: 20Kg of Microdur Base + 5L of water

Volume: 20Kg

Suitable for:



Vertical surfaces



Floors

Properties:



UNE EN 13813  
CT-C40-F10



Antislip



## microdur<sup>®</sup> THICK BASE

Single-component microcement that is used as a previous step for the preparation of microcements Fine, Medium, Fine Base or Base. The regularization of the aggregate is very good due to its size, which allows to obtain a perfect planimetry with a high covering power. It has a very high compression hardness. In case of opting for the application of Microdur Fine it is convenient to apply one or two coats of Microdur Medium previously to fill the Thick Base. In this way you will need fewer coats of Microdur Fine, which helps to achieve higher compression hardness.

Classified as CT-C40-F10 according to the UNE-EN 13813 standard.

Consumption: 1,5Kg/m<sup>2</sup>

Proportion: 20Kg of Microdur Thick Base + 5L of water

Volume: 20Kg

Suitable for:



Vertical surfaces



Floors

Properties:



UNE EN 13813  
CT-C40-F10



Antislip





# microlevel®

## - THE SAFETY -

### SINGLE-COMPONENTMICROCEMENT

The Microlevel line of microcement is characterized by being a coating with a tendency to level, without being a self-levelling. This quality allows the beading produced by the trowel, in its application, to be fainter. The stucco effect, characteristic of microcement, is concealed, producing a noticeably smoother finish. This material is mixed with water and therefore we speak of its great simplicity of use.

### MICROLEVEL'S CHARACTERISTICS



1 h of product's  
pot life



Stucco effect



Levelling tendency

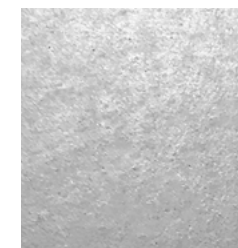
**48** MPa

Compressive  
strength

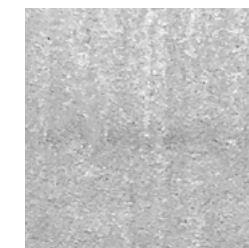
**1** Component

Water + Powder

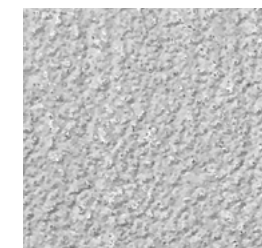
### GRANULOMETRIES



Fine



Medium



Base





## microlevel® FINE

24

Microcement of fine texture finish. After adding the toner of the chosen colour you will obtain a smooth decorative surface with stucco effect. It is recommended for Vertical surfaces, since it does not have non-slip properties. However, it could also be applied on horizontal surfaces.

Classified as CT-C30-F9 according to the UNE-EN 13813 standard.

Consumption: 0,5Kg/m<sup>2</sup>

Proportion: 10Kg of Microlevel Fine + 3,5L of water

Volume: 10Kg

Suitable for:



Vertical  
surfaces

Properties:



UNE EN 13813  
CT-C30-F9



## microlevel® MEDIUM

Microlevel Medium has thicker granulometry than Microlevel Fine, which makes its finish more subtle (less stucco effect). After adding the toner of the chosen colour, the result will be a slightly textured surface, much more resistant and of superior hardness. The grain size provides it with anti-slip properties. It can be applied on a multitude of surfaces, however, its most recommended use is on medium traffic pavements. It is recommended for horizontal surfaces only.

Classified as CT-C40-F10 according to the UNE-EN 13813 standard.

Consumption: 0,6Kg/m<sup>2</sup>

Proportion: 20Kg of Microlevel Medium + 4,5L of water.

Volume: 20Kg

Suitable for:



Floors

Properties:



UNE EN 13813  
CT-C40-F10



Antislip



## microlevel® BASE

25

Microcement that is used as a previous step to Microlevel Fine or Microlevel Medium. However, it can also be applied as a single step so that the same base acts as the finishing layer. The result will be a much rougher surface, without any stucco effect and with a high anti-slip power. By adding the toner of the chosen colour you will obtain a decorative finish, with a high planimetry that allows the product to match very well on horizontal surfaces. It is recommended for pavements and extreme traffic floors.

Classified as CT-C40-F10 according to the UNE-EN 13813 standard.

Consumption: 1Kg/m<sup>2</sup>

Proportion: 20Kg of Microlevel Base + 4L of water

Volume: 20Kg

Suitable for:



Floors

Properties:



UNE EN 13813  
CT-C40-F10



Antislip

# micropool®

## - THE ADAPTATION -

### DUAL-COMPONENT MICROCEMENT

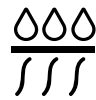
The Micropool line of microcement is a two-component coating that only needs to be mixed with a catalyst for hardening.

It is specially designed for applications on surfaces immersed in water such as swimming pools. Specifically formulated to create a certain permeability to water steam to avoid blistering due to lack of permeability.

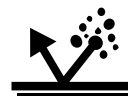
### MICROPOOL'S CHARACTERISTICS



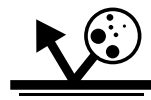
Waterproof



Durability to water

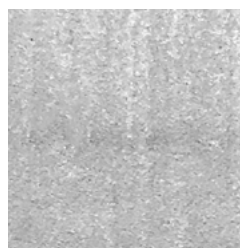


Resistance to chlorine  
and salt water

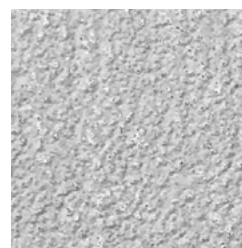


Does not produce  
blisters

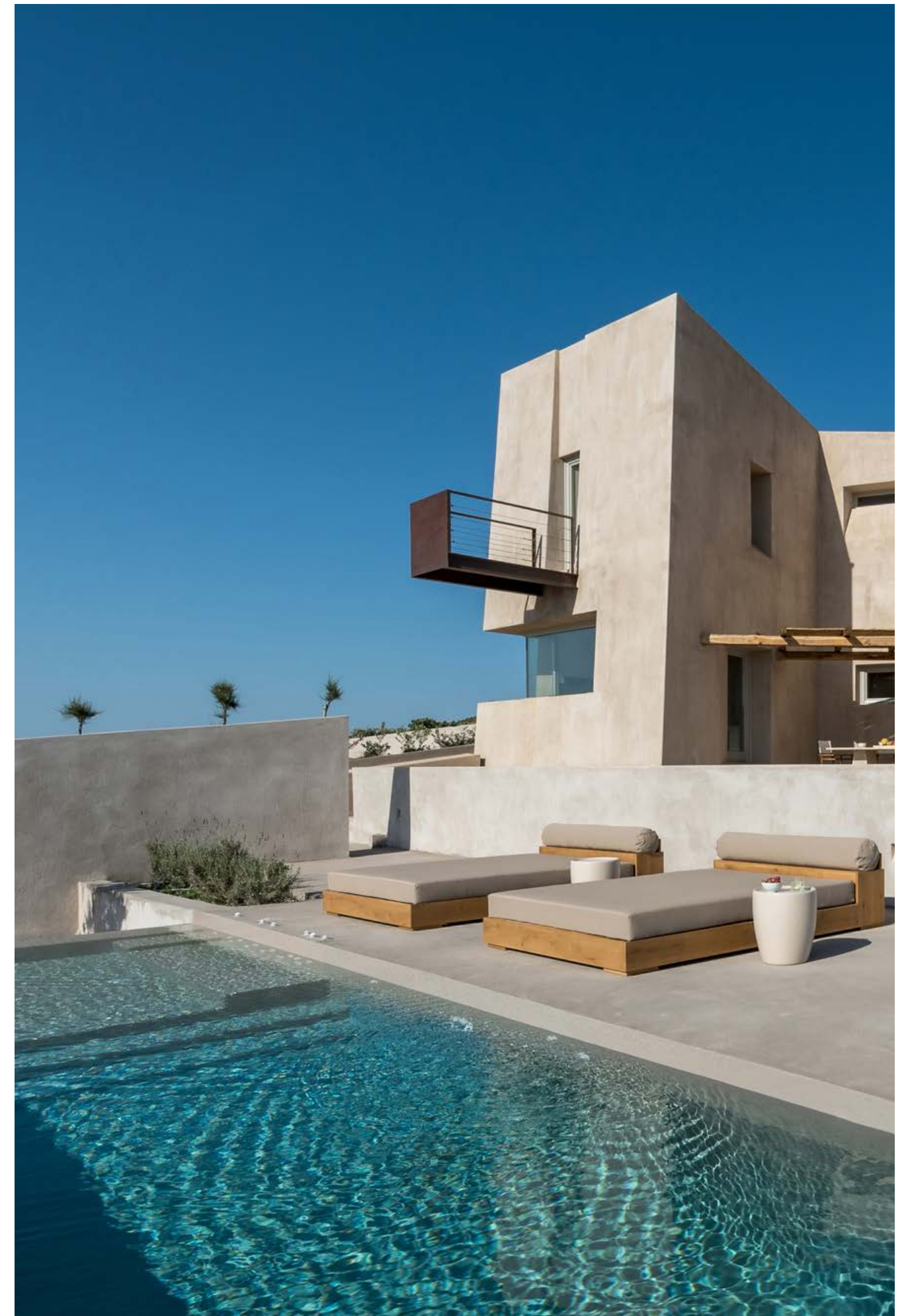
### GRANULOMETRIES



Finisher



Base







# micropool® FINISH

28 Micropool finish has a medium grain size and is a two-component coating that is only need to be mixed with a catalyst. It is especially indicated for applications on surfaces immersed in water, such as swimming pools or ponds. It is recommended to apply two coats of Micropool Finisher over Micropool Base.

Classified according to UNE-EN 13813 as CT-C40-F10.

Consumption: 0,6Kg/m²

Proportion: 10Kg of Micropool Finisher + 1L of hardener

Volume: 10Kg

Suitable for:

Properties:



Vertical surfaces



Floors



UNE EN 13813 CT-C40-F10



Antislip



# micropool® BASE

29 Micropool Base is a two-component regularization coating that is used as a previous step to the application of Micropool Finisher. It is especially indicated for applications on surfaces immersed in water. It has a thicker granulometry to regularize the substrate. Its application is made with a trowel directly on the gunite or concrete surfaces. It is recommended to apply minimum two coats of Micropool Base.

Classified according to UNE-EN 13813 as CT-C40-F10.

Consumption: 1Kg/m²

Proportion: 10Kg of Micropool Base + 1L of hardener

Volume: 10Kg

Suitable for:

Properties:



Vertical surfaces



Floors



UNE EN 13813 CT-C40-F10



Antislip





microne®

## - THE SIMPLICITY -

2 IN 1 - READY TO USE OR DUAL-COMPONENT MICROCEMENT

The new formula of the Microne microcement line, based on polyurethane, is characterized by being the most versatile line: it is 2 products in 1. Microne can be a 'ready-to-use' microcement with a hardness of 27 Mpa, or a 'bicomponent' microcement if we add component B (Catalyst), thus increasing its hardness to 65 Mpa.

Microne 'Bi-component' allows its application on high traffic floors, with an excellent result. Microne 'ready-to-use' is waterproof in mass, but by adding the catalyst we increase its waterproofing even more.

In both versions, just add the color and shake. Thanks to its high impermeability it is not necessary to apply several coats of pore-sealer to protect it; two coats of varnish are enough to avoid dust and stains. In addition, the possible marks of the roller and those produced by the absorption of the surface are avoided. The time of execution/application decreases considerably by not requiring extra coats of pore-sealer, or waiting time between coats. It is ideal for humid places such as bathrooms, shower trays, saunas or exteriors since it does not darken when in contact with water. It has a great adhesion on different substrates and very good resistance to wear. Easy workability and application. It is not suitable for swimming pools or surfaces in continuous immersion.

### MICRONE'S CHARACTERISTICS



Waterproof



2 Versions:  
Continuous effect  
Stucco effect

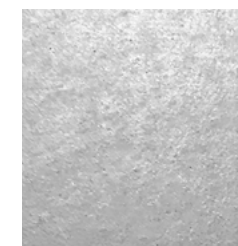
27-65 MPa

Compressive strength

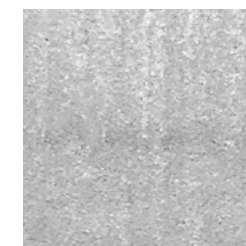
2 Versions

Ready-to-use

### GRANULOMETRIES



Fine



Medium



Base



## microne. FINE

32 Microcement of fine texture finish. After adding the toner of the chosen colour you will obtain a smooth decorative surface with or without stucco effect. It is recommended only for vertical and non-trafficable surfaces, since it does not have non-slip properties.

Consumption: 0,5Kg/m<sup>2</sup>

Volume: 5Kg and 10Kg

Suitable for:



Vertical surfaces



## microne. MEDIUM

Microne Medium has thicker granulometry than Microne Fine. With or without stucco effect. After adding the toner of the chosen colour, the result will be a slightly textured surface, much more resistant and of superior hardness. The grain size provides it with anti-slip properties. It can be applied on a multitude of surfaces, however, its most recommended use is on medium traffic pavements. It can also be applied on Vertical surfaces or walls.

Consumption: 0,6Kg/m<sup>2</sup>

Volume: 5Kg and 10Kg

Suitable for:



Vertical surfaces



Floors

Properties:



Antislip



## microne. BASE

Microcement of low roughness texture. Without Stucco effect. After adding the toner of the chosen colour you will obtain a decorative finish with a very good planimetry on horizontal surfaces. It stands out for having a greater anti-slip power and for being more resistant and harder than the Medium and Fine. It is recommended for floors and medium traffic pavements. It can also be applied on Vertical surfaces or walls.

Consumption: 1Kg/m<sup>2</sup>

Volume: 5Kg and 10Kg

Suitable for:



Vertical surfaces



Floors

Properties:



Antislip



## microne plus HARDENER

33 By adding Microne Plus (polyurethane catalyst) to any of the 'ready-to-use' Microne products, you will obtain a two-component microcement. The result of this combination is reflected in improved performance of the ready-to-use Microne. The hardness increases from 27 Mpa to 65 Mpa, as well as its impermeability and adhesion power. This makes it an ideal microcement for application in high traffic areas such as: stores, hotels, restaurants, etc. The pot-life is approximately 1,5 hour.

Compatible granulometries: fine, medium and base.

Proportion: 10Kg Microne + 0,5L of hardener.

Format: 0,5L and 0,25L.



# micro Röck®

## - THE STRENGTH -

### DUAL-COMPONENT MICROCEMENT

The Microröck microcement line is characterized by being bicomponent and waterproof. It's a product of incomparable characteristics until now, as it is a microcement whose hardness is superior to that of polished cement with a mineral appearance. In addition, its compressive and tensile strength is unmatched. Thanks to this, sealants do not soften the product and the microcement is not affected by solvents or chemical compounds.

Thanks to its impermeability, it is not necessary to apply several coats of pore sealer to protect it. A couple of coats of varnish is sufficient to prevent dust and stains.

Microröck surfaces do not fissure or crack and do not stain. It has a high adherence to any substrate and specially designed to be applied in high traffic areas.

### MICRORÖCK'S CHARACTERISTICS



Waterproof



2 Versions:  
Continuous effect  
Stucco effect

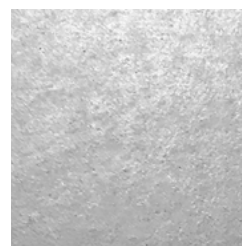
80 MPa

Compressive strength

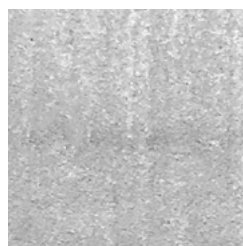
2 Components

Ready-to-use + hardener

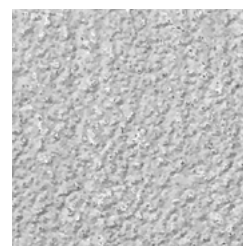
### GRANULOMETRIES



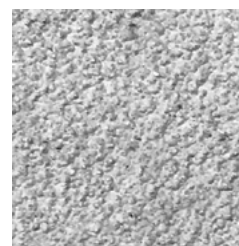
Fine



Medium



Base



Thick Base







## microröck. FINE

36 Microcement of fine texture finish. After adding the toner of the chosen colour you will obtain a smooth decorative surface with or without stucco effect. It is recommended for both vertical and horizontal surfaces.

Classified as CT-C40-F10 according to the UNE-EN 13813 standard.

Consumption: 0,5Kg/m<sup>2</sup>

Proportion: 10Kg of Microröck Fine + 1L of hardener

Volume: 5Kg and 10Kg

Suitable for:



Vertical surfaces



Floors

Properties:



UNE EN 13813  
CT-C40-F10



## microröck. MEDIUM

Microröck Medium has thicker granulometry than Microröck Fine. With or without stucco effect. After adding the toner of the chosen colour, the result will be a slightly textured surface, much more resistant and of superior hardness. The grain size provides it with anti-slip properties. It can be applied on a multitude of surfaces, however, its most recommended use is on high traffic pavements. It can also be applied on Vertical surfaces or walls.

Classified as CT-C40-F10 according to the UNE-EN 13813 standard.

Consumption: 0,6Kg/m<sup>2</sup>

Proportion: 10Kg of Microröck Medium + 1L of hardener

Volume: 5Kg and 10Kg

Suitable for:



Vertical surfaces



Floors

Properties:



UNE EN 13813  
CT-C40-F10



Antislip



## microröck. BASE

Microcement with roughness, resistance and hardness superior to Medium. Without Stucco effect. It stands out for its high anti-slip power. After adding the toner of the chosen colour you will get a rough decorative finish, with a high planimetry that allows the product to match very well on horizontal surfaces. It is recommended for floors and extreme traffic pavements. It can also be applied on Vertical surfaces.

Classified according to UNE-EN 13813 as CT-C40-F10.

Consumption: 1Kg/m<sup>2</sup>

Proportion: 10Kg of Microröck Base + 1L of hardener

Volume: 5Kg and 10Kg

Suitable for:



Vertical surfaces



Floors

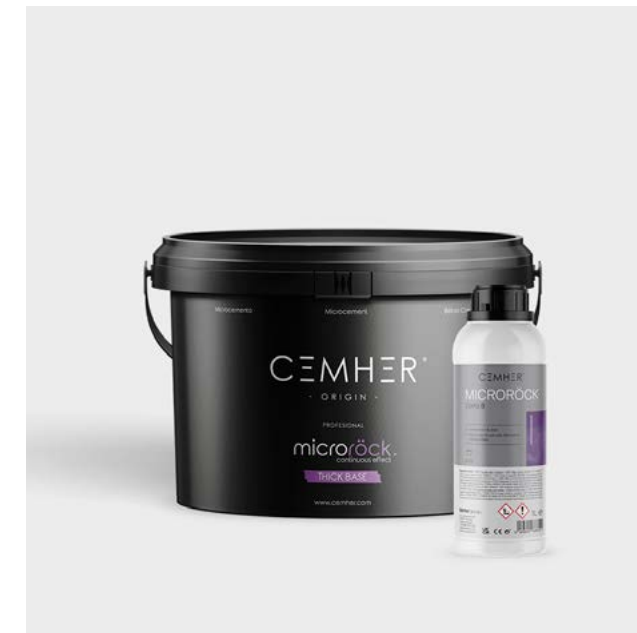
Properties:



UNE EN 13813  
CT-C40-F10



Antislip



## microröck. THICK BASE

37 Single-component microcement that is used as a previous step for the preparation of microcements Fine, Medium or Base. The regularization of the aggregate is very good due to its size, which allows to obtain a perfect planimetry with a high covering power. It has a very high compressive strength. In case of opting for the application of Microröck Fine, it is convenient to apply one or two coats of Microröck Medium previously to fill the Thick Base. In this way we will need fewer coats of Microröck Fine, so we will get more hardness to compression.

Classified according to UNE-EN 13813 as CT-C40-F10.

Consumption: 1,5Kg/m<sup>2</sup>

Proportion: 10Kg of Microröck Base + 1L of hardener

Volume: 5Kg and 10Kg

Suitable for:



Vertical surfaces



Floors

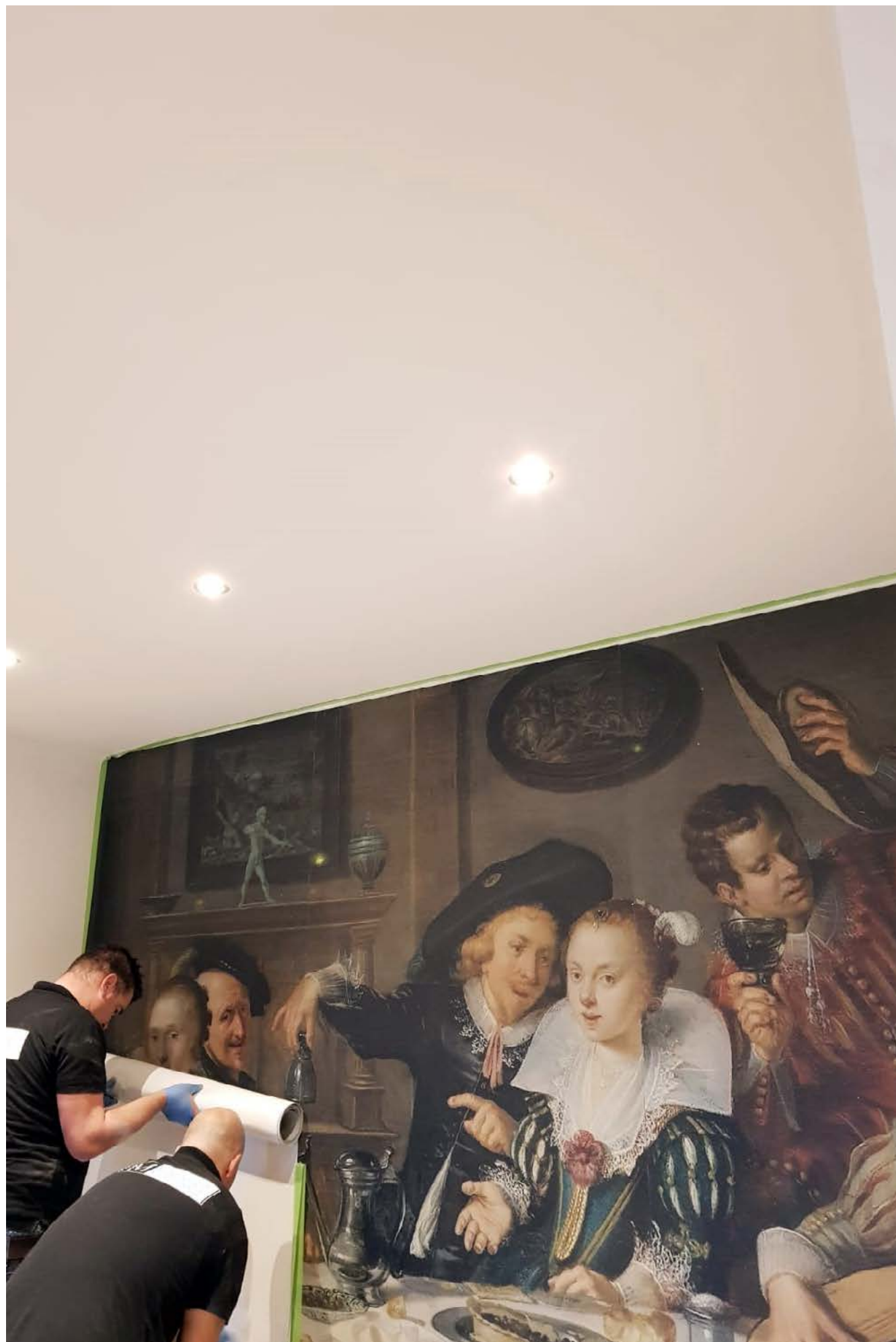
Properties:



UNE EN 13813  
CT-C40-F10



Antislip



# microflex

## - THE FLEXIBILITY -

### DUAL-COMPONENT MICROCEMENT

The Microflex line of two-component microcement is characterized above all by its great flexibility. It can be rolled up as if it were a fabric. Even with multiple, thick layers, it remains a very flexible material. It has not yet been equaled by any other coating. In addition, it is waterproof, a really important attribute depending on the surface where it is to be applied.

Its flexibility makes this microcement the ideal product for buildings or constructions with a lot of structural movement. Especially in metal or wood structures, due to the processes of expansion and contraction. It is the most suitable microcement to apply on any area with a predisposition to the appearance of cracks or fissures, whatever their origin. It can be applied both indoors and outdoors.

It can be combined with any other CEMHER microcement line, except Microröck.

### MICROFLEX'S CHARACTERISTICS



Waterproof



Minimal stucco effect

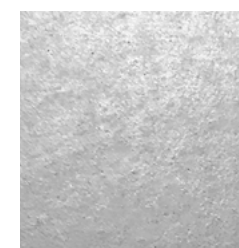
75%

Elongation at break

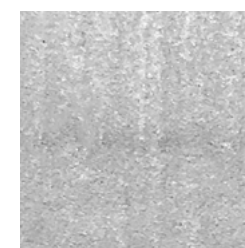
2 Components

Powder + Resin

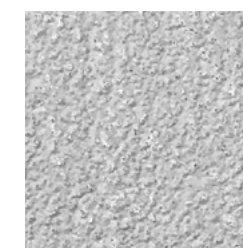
### GRANULOMETRIES



Fine



Medium



Base



## microflex FINE

40 Microcement of fine texture finish. After adding the toner of the chosen colour you will obtain a decorative surface with almost no stucco effect. It is recommended for both vertical and horizontal surfaces. Its most recommended use is on walls and floors exposed to the action of water and cracking.

Determination of elongation tensile properties: 75% ISO- 527-3

Watertightness, waterproofing:  
UNE EN 14891:2017 - para. A7

Consumption: 0,5Kg/m<sup>2</sup>

Proportion: 10Kg of Microflex Fine + 8L of Resinflex

Volume: 10Kg

Suitable for:



Vertical  
surfaces



Floors

Properties:



Crack  
resistance



## microflex MEDIUM

Microflex Medium has thicker granulometry than Microflex Fine. With almost no stucco effect. After adding the toner of the chosen colour, the result will be a slightly textured surface, much more resistant and of superior hardness. The grain size provides it with anti-slip properties. It can be applied on a multitude of surfaces, however, its most recommended use is on walls and floors exposed to the action of water and cracking.

Determination of elongation tensile properties: 68% ISO- 527-3

Watertightness, waterproofing:  
UNE EN 14891:2017 - para. A7

Consumption: 0,6Kg/m<sup>2</sup>

Proportion: 20Kg of Microflex Medium + 10L of Resinflex

Volume: 20Kg

Suitable for:



Vertical  
surfaces



Floors

Properties:



Crack  
resistance



Antislip



## microflex BASE

Microcement with a roughness, resistance and hardness above average. Without stucco effect. It stands out for its high anti-slip power. After adding the toner of the chosen colour you will obtain a rough decorative finish, with a high planimetry that allows the product to match very well on horizontal surfaces. It is recommended for walls and floors exposed to the action of water and cracking.

Determination of elongation tensile properties: 65% ISO- 527-3

Watertightness, waterproofing:  
UNE EN 14891:2017 - para. A7

Consumption: 1Kg/m<sup>2</sup>

Proportion: 20Kg of Microflex Base + 8L of Resinflex

Volume: 20Kg

Suitable for:



Vertical  
surfaces



Floors

Properties:



Crack  
resistance



Antislip



## RESINFLEX

41 Resinflex is a special resin for two-component microcement systems (Microflex). Mixed in the right proportion, it provides excellent compatibility, hardness and adhesion to Microflex microcement systems.

Volume: 8L and 10L



# microtadelakt®

## - CREATIVITY -

### SINGLE-COMPONENT MICROCEMENT

The Microtadelakt line is a single-component lime-based microcement. It has been formulated to be applied as a low-thickness continuous coating on floors and walls. It stands out for its handmade finish, its workability and its extreme hardness. It is applied by trowel in several coats allowing to achieve a great variety of effects such as tadelakt or concrete finishes.

Formulated with hydraulic binders, selected aggregates and lime, Microtadelakt must be mixed with water according to the proportions in this technical data sheet to guarantee the properties of the coating

Once mixed, it can be used to create a coating with a low thickness of 1 to 3 mm, with high mechanical strength, very good workability and strong adhesion on any type of substrate: concrete, cementitious mortars, ceramics, MDF, plaster and plasterboard.

### CARACTERÍSTICAS DE MICROTADELAKT



2 h of product's pot life



Stucco effect

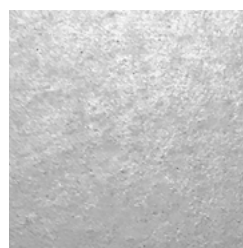
40 MPa

Compressive strength

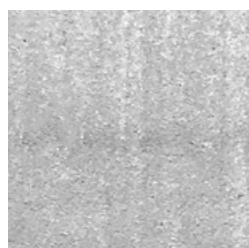
1 Component

Water + Powder

### GRANULOMETRIES



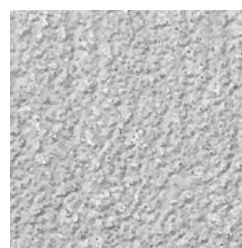
Fine



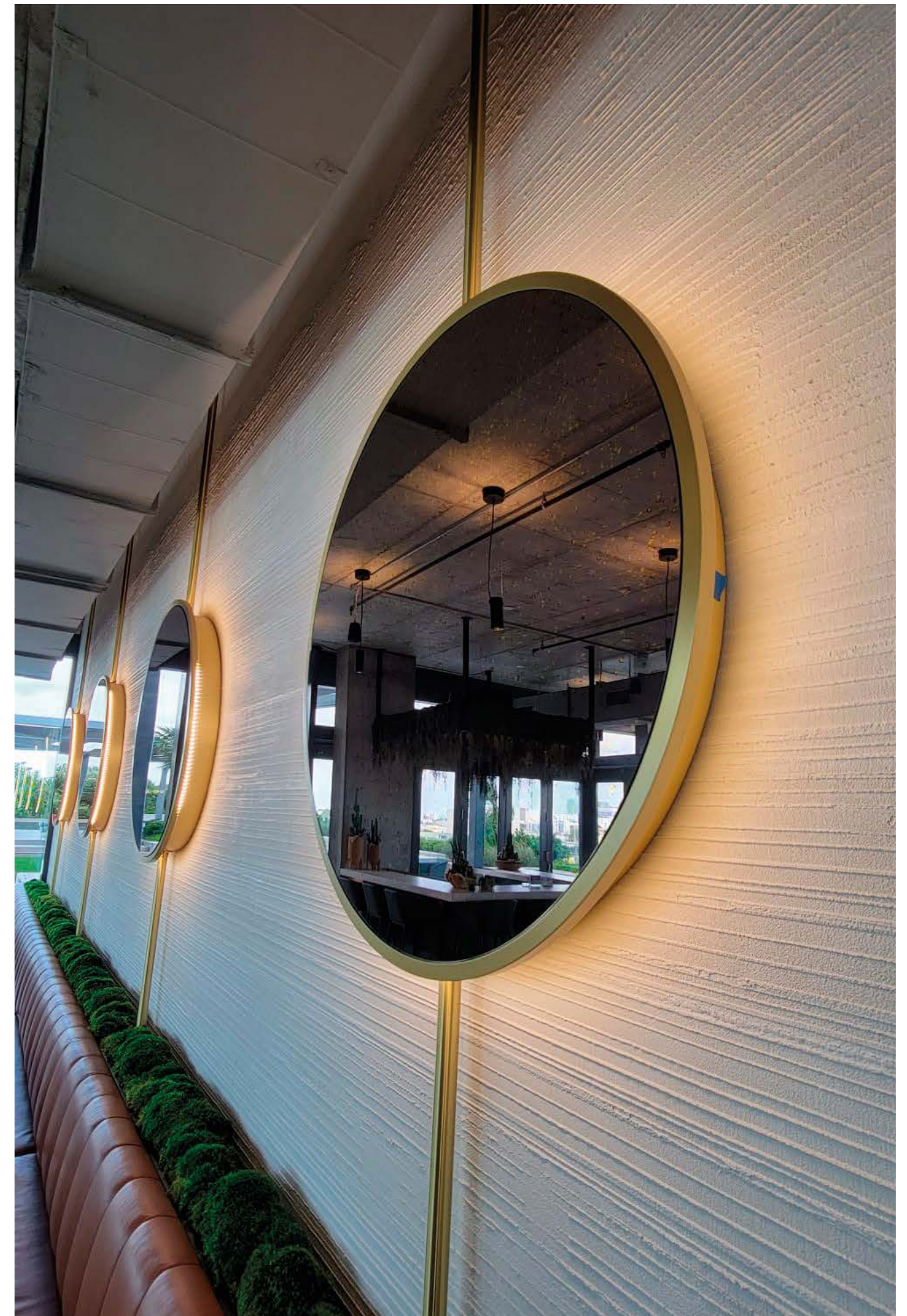
Regular



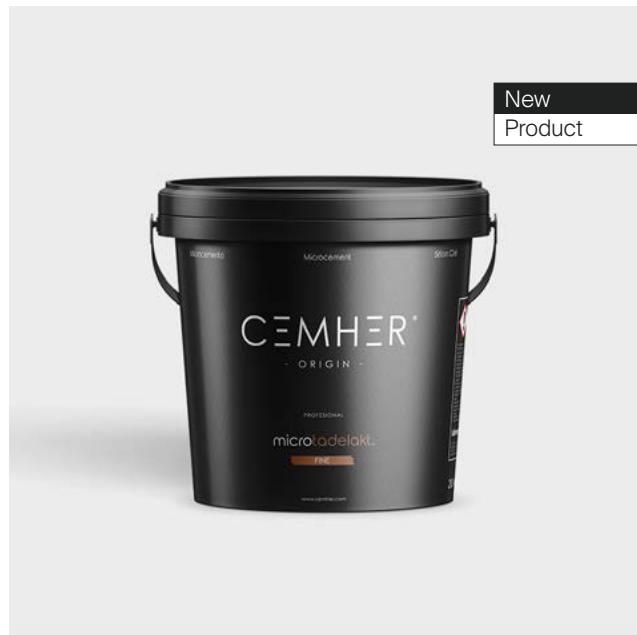
Medium



Base







## microtadelakt. FINE

44

Microcement of fine texture finish. After adding the toner of the chosen colour you will obtain a smooth decorative surface with stucco effect. It is recommended only for vertical and non-trafficable surfaces, since it does not have non-slip properties.

Classified as CT-C30-F9 according to the UNE-EN 13813 standard.

Consumption: 0,5Kg/m<sup>2</sup>

Proportion: 10Kg of Microtadelakt Fine + 4L of water

Volume: 10Kg

Suitable for:

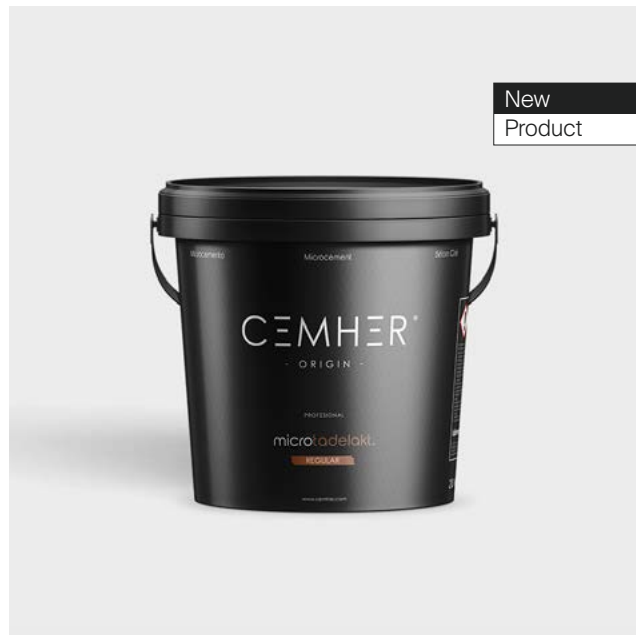


Vertical surfaces

Properties:



UNE EN 13813  
CT-C30-F9



## microtadelakt. REGULAR

Microcement with an intermediate finish, between Fine and Medium. It achieves a more subtle finish (less stucco effect than Fine). After adding the toner of the chosen colour, the result will be a slightly textured surface, much more resistant and of superior hardness. The grain size provides it with anti-slip properties. It can be applied on a multitude of surfaces, however, its most recommended use is on medium traffic pavements. It can also be applied on vertical surfaces or walls.

Classified as CT-C40-F10 according to the UNE-EN 13813 standard.

Consumption: 0,6Kg/m<sup>2</sup>

Proportion: 10Kg of Microtadelakt Regular + 4L of water.

Volume: 10Kg

Suitable for:



Vertical surfaces

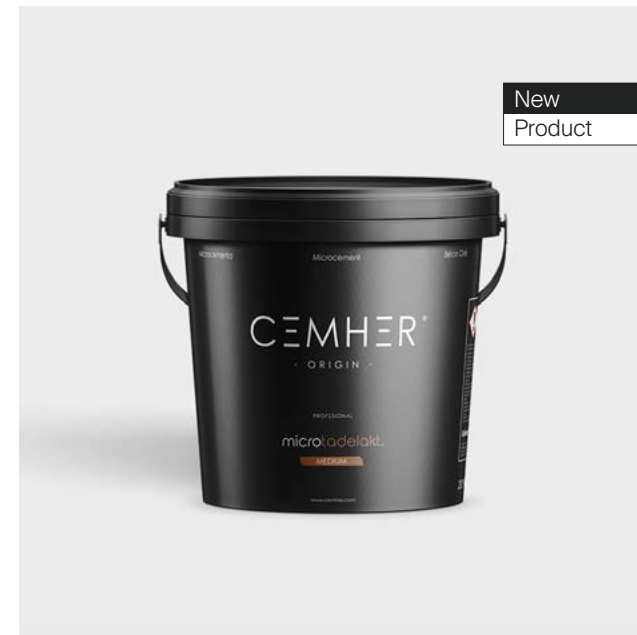


Floors

Properties:



UNE EN 13813  
CT-C40-F10



## microtadelakt. MEDIUM

Microtadelakt Medium has thicker granulometry than Microtadelakt Regular, which makes its finish more rustic. After adding the toner of the chosen colour, the result will be a slightly textured surface, much more resistant and of superior hardness. The grain size provides it with anti-slip properties. It can be applied on a multitude of surfaces, however, its most recommended use is on medium traffic pavements. It can also be applied on vertical surfaces or walls.

Classified as CT-C40-F10 according to the UNE-EN 13813 standard.

Consumption: 0,6Kg/m<sup>2</sup>

Proportion: 20Kg of Microtadelakt Medium + 6,5L of water

Volume: 20Kg

Suitable for:



Vertical surfaces



Floors

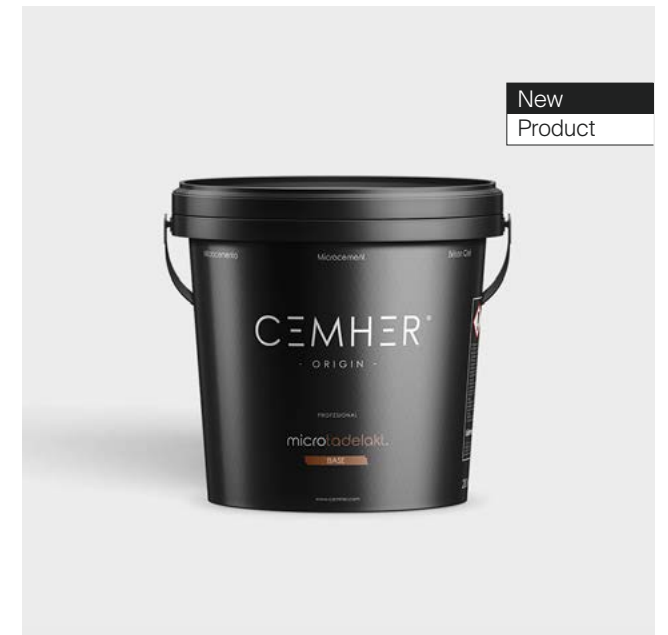
Properties:



UNE EN 13813  
CT-C40-F10



Antislip



## microtadelakt. BASE

Microcement with a roughness, strength and hardness superior to Medium. Without Stucco effect. It stands out for its high anti-slip power. After adding the toner of the chosen colour we will obtain a rough decorative finish, with a high planimetry that will allow the product to match very well on horizontal surfaces. It is recommended for horizontal surfaces and extreme traffic floors. It can also be applied on vertical surfaces or walls.

Classified as CT-C40-F10 according to the UNE-EN 13813 standard.

Consumption: 1Kg/m<sup>2</sup>

Proportion: 20Kg of Microtadelakt Base + 5L of water

Volume: 20Kg

Suitable for:



Vertical surfaces



Floors

Properties:



UNE EN 13813  
CT-C40-F10



Antislip

45

# PIGMENTS





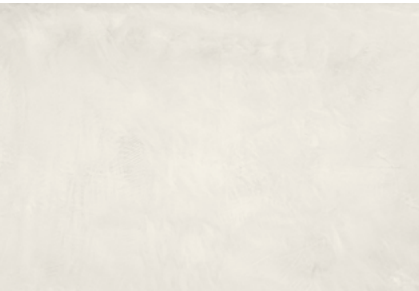
TONERS

24 coloured toners for microcement systems in powder and microcements in paste: for Microduo, Microdur, Microlevel, Microne, Microröck, Micropool and Microflex systems.

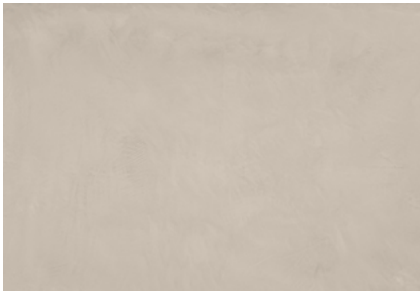
Volume: 250g and 100g (Microröck Stucco).



Branco



Bone



Terra



Perla



Magnetic



Dark



Hakuba



Xenon Grey



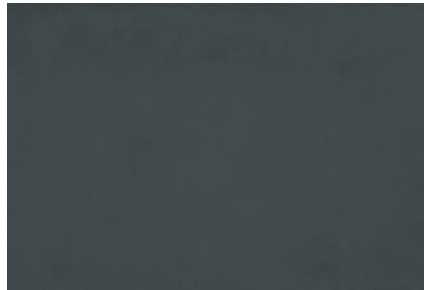
Onyx



Mountain



Cement



Pizarra



Topo



Amazonia



Militaire



Cream



Latte



Coffee



Fossile



Mojave



Africa



Golden Sand



Reef



Terracota



DYE

50 Highly additive polymers with mineral pigments. With these 41 concentrates you can obtain each and every one of the colours of our colour chart.

If you wish to obtain more colours, with these 41 concentrates you can create up to 8 gradations of each concentrate, obtaining a total of 328 colours.

Volume: 1L

Concentrates:	90	700	3200	6020
	100	720	4170	6030
	200	760	4200	6100
	230	790	4300	7200
	300	840	4600	10200
	330	850	4900	10850
	340	900	5400	14610
	350	1200	5600	
	360	1300	5700	
	370	2100	5800	
	400	3100	6010	



CONCENTRATE

Range of inorganic pigments with good resistance to UV radiation and weathering. High concentration for colouring all our waterborne product lines.

Volume: 1L

- Colours: White  
Yellow SS  
Red SS  
Black SS  
Yellow XX  
Red XX  
Black XX  
Yellow OX AD  
Red OX AD  
Black C501  
Yellow AD  
Red live AD  
Blue AD  
Green AD



STONE EFFECT

Highly decorative pigments on acrylic base and with very good penetrability, specially designed for use in microcement or concrete.

51

Stone Effect creates a wide variety of natural effects. Unlike the acids on the market, which have a similar effect, Stone Effect does not require a chemical reaction. This makes possible to control the colouration and therefore the final aesthetic result.

It can be applied by spray, sponge or brush.

Consumption: 10 - 12m²/L

Volume: 1L







# PREPARATION

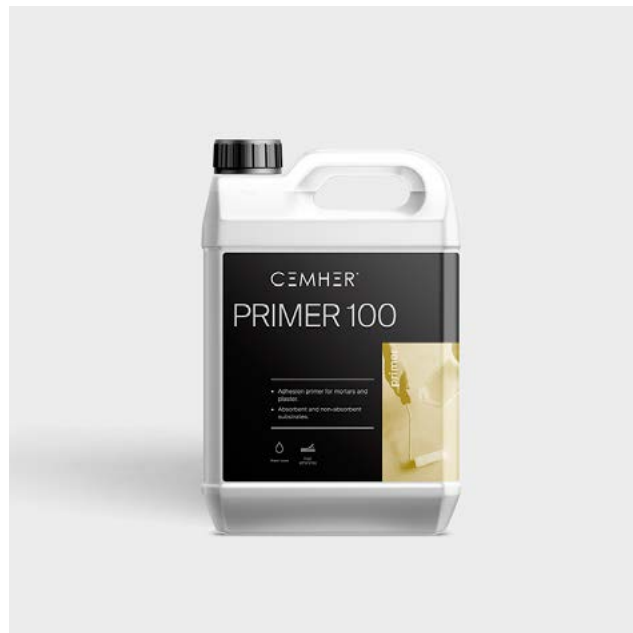


## PRIMER 100

It is a water-based resin that acts as a promoter of adhesion between a **porous and non-porous surface** and microcement. Noted for its high adhesion and maintain stickiness (residual tack) permanently, so it allows a high time of action in the application of the subsequent layer of microcement. It has a great elasticity that makes it resist excellently to different weather conditions.

Consumption: 6 - 8m<sup>2</sup>/L

Volume: 5L and 25L

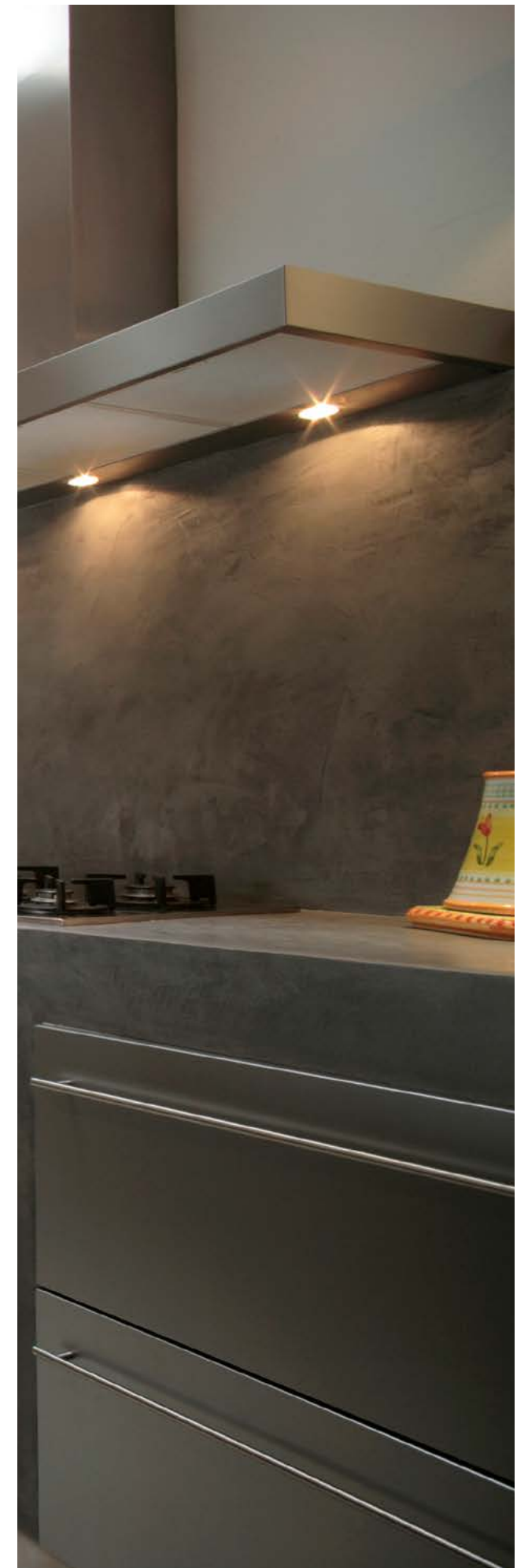


## COMPACTEC

Water-based epoxy resin with low viscosity. It acts as a consolidant and surface hardener for weak substrates, such as poor cement mortars, lime mortars, old concrete, etc. It can be applied on: concrete, cement mortars, lime mortars, gypsum, anhydrite and brick. **It stands out for its high penetrating and consolidating power of dusty surfaces, besides homogenizing the porosity.**

Consumption: 6 - 8m<sup>2</sup>/L

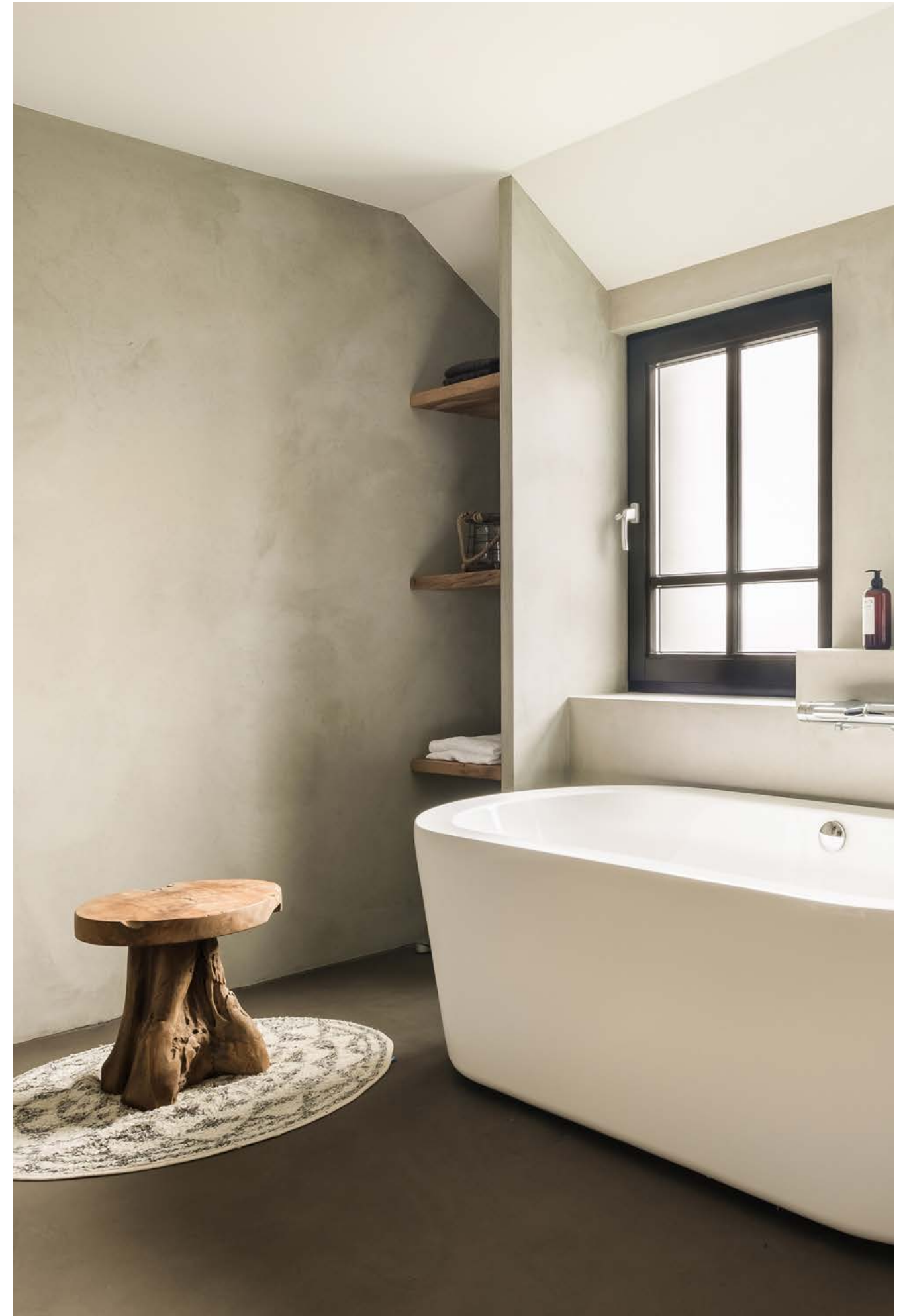
Volume: 5L + 1L





# PREPARATION

## VAPOUR BARRIER





## IMPRIPOX

58

Two-component epoxy resin with high solids content (80%). High chemical resistance and impermeability. Acts as a vapor barrier to block rising damp and inhibits the appearance of moisture stains in tile joints. It can also be used as a colourless epoxy varnish on microcements or mortars. It has high chemical and mechanical resistance and scratch resistance. Easy to apply by roller.

Consumption: 6 - 7m<sup>2</sup>/L

Volume: 5L + 2L



## AQUASELL

Two-component water-based epoxy resin. It stands out for its very high adhesion even on surfaces with certain humidity (less than 8%). It acts as a vapor barrier to block rising humidity. It can also be used as a water-based epoxy varnish on microcements or mortars. It has high chemical and mechanical resistance and stands out for its high scratch resistance and impermeability. Does not contain organic solvents.

Consumption: 8m<sup>2</sup>/L

Volume: 5L + 2L



## VAPOEPOX

Two-component, 100% solids, epoxy damp-proofing primer. It can be used as a vapor barrier or as a barrier against rising damp. It has a very high adhesion to the substrate, highlighting its excellent workability thanks to its low viscosity and **the possibility of its application on wet substrate** (not waterlogged). The application of Vapoepox on tiles is a perfect solution for joint tracing on microcement.

Consumption: 1m<sup>2</sup>/L

Volume: 1L + 0,5L or 4L + 2L



59





# SEALANTS

PORE SEALERS



# HYDROPRIMER

62

Single-component high solids acrylic sealer. Waterproofs the substrate and seals it for the subsequent application of polyurethane finishes. Reduces the consumption of polyurethane finishes and avoids kneading due to its pore-covering action.

Consumption: 10m<sup>2</sup>/L

Volume: 5L



# HARD SEALANT

63

One-component polyurethane consolidating pore sealer. It not only waterproofs and seals the substrate like acrylic sealers, but also provides an extraordinary final hardness to the whole system (the harder the base, the harder the final finish). It has a fast drying time that will allow the application of polyurethane finishes in less time than with conventional acrylics. In addition, it stands out for the low or null alteration of the colour of the microcement.

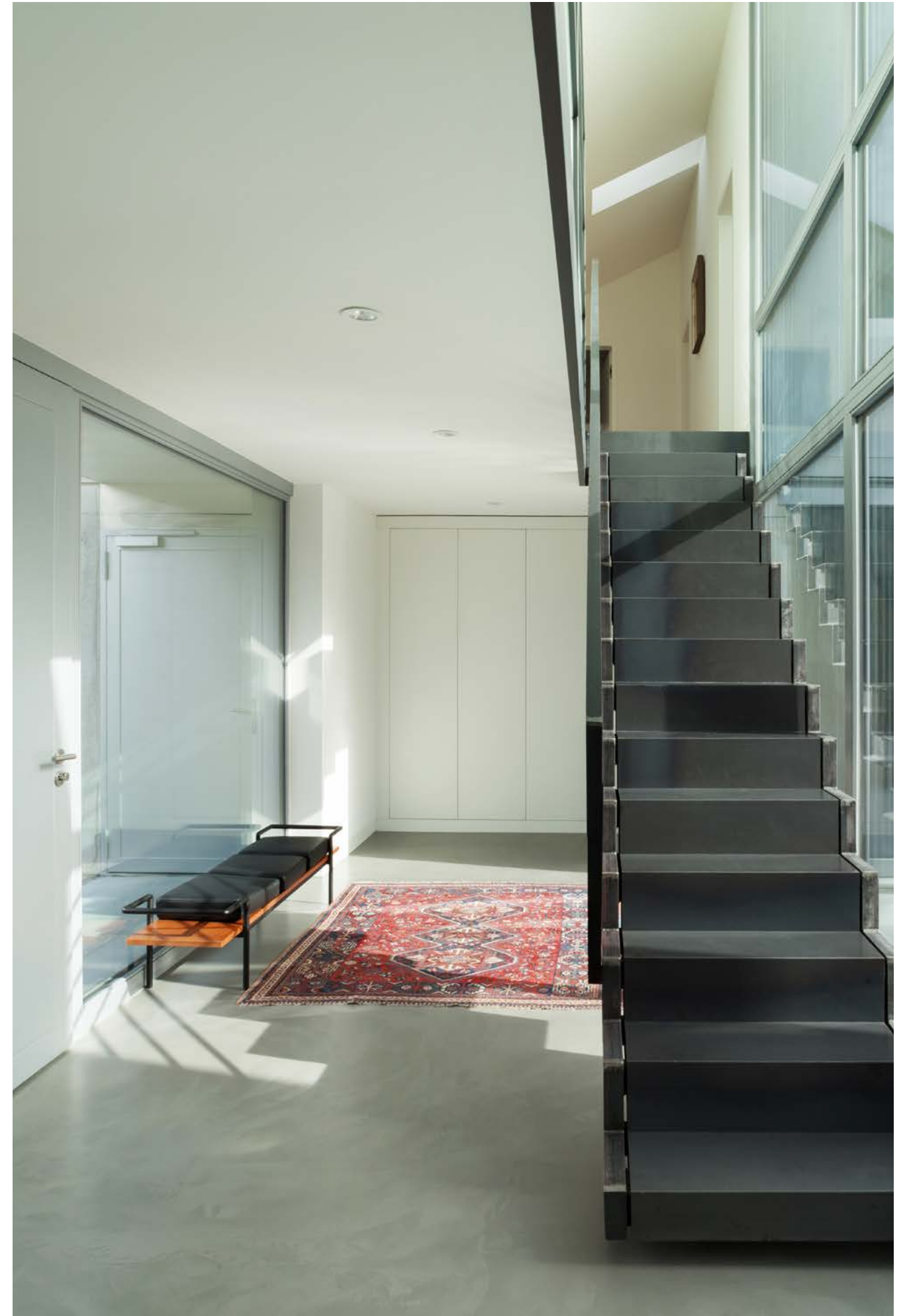
Consumption: 10m<sup>2</sup>/L

Volume: 5L



# SEALANTS

## POLYURETHANES





## AQUAMAX PLUS

66

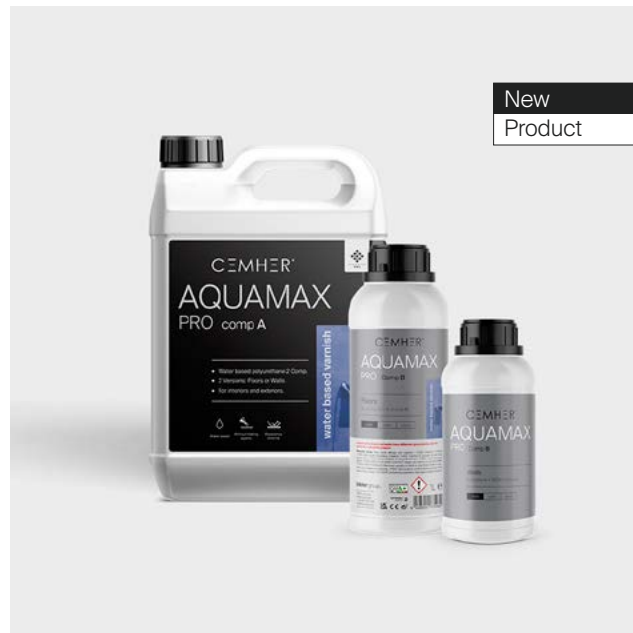
Two-component water-based polyurethane varnish of excellent hardness and good chemical resistance. It stands out for its easy application, leaving a very uniform final appearance without marks or kneading. Allows to obtain stretched finishes, without defects and with a soft touch. High resistance to chemical agents such as bleach, hydrochloric acid or vinegar. Protects against wine, coffee and oil stains. It must be previously sealed with Hydroprimer or Hard Sealant. Suitable for indoor and outdoor applications. Matt, satin or gloss finish.

Consumption: 10m<sup>2</sup>/L

Proportion: 10% (5L comp "A" + 0,5L comp "B")

Finish: gloss, satin and matt

Volume: 5L + 0,5L



## AQUAMAX PRO

Two-component water-based polyurethane coating with excellent hardness and chemical resistance. Developed with the innovative WMA (Without Matting Agents) technology, characterized by the absence of matting agents in satin and matte finishes. This provides excellent chemical and stain resistance. Another important feature is the choice of hardener depending on the type of surface (Walls 500ml and Floors 1L). The higher the amount of hardener, the higher the hardness and chemical resistance of the coating. Suitable for the protection of high traffic surfaces such as sidewalks, sports fields, concrete, wood, parquet and in general those surfaces that require an excellent aesthetic and protective coating.

Very high resistance to scratches and chemical products such as bleach, salfuman or vinegar. Does not absorb wine, coffee or oil stains. With 50% solids, Aquamax Pro provides higher fillability for longer lasting coatings. Even at high solids, it provides excellent roller application with a spraygun-like finish. Suitable for exterior and interior applications.

Consumption: 8m<sup>2</sup>/L

Floor application rate: (5L+1L | 1L + 200ml)

Wall application rate: (5L+500ml | 1L + 100ml)

Finish: gloss, satin and matt



## AQUAPUR 70

Colorless varnish formulated with water-based resins for an exceptionally hard finish and excellent water resistance. It is the only water-based polyurethane with maximum durability and high solids content (65%, more than other water-based polyurethanes) - special characteristics that provide unmatched resistance to stains, both chemical and those produced by traffic and household pollutants that are difficult to clean on other polyurethane coatings.

Moreover, the high solids content ensures superior waterproofing, sealing absorbent substrates with greater efficiency and enhancing the water resistance of all types of surfaces. The increased ratio of hardener (40%) to component A provides exceptional hardness without reducing the working time with the mixture: more than 2 hours of pot-life.

Consumption: 150g/m<sup>2</sup>/L

Proportion: 40% (5L comp "A" + 2L comp "B")

Finish: gloss, satin and matt

Volume: 5L + 2L



67





MAXIPUR 25%

68

Two-component solvent-based aliphatic acrylic polyurethane varnish. It has a **higher viscosity and solids content than Maxipur 50%**, which provides a **higher filling and covering capacity**. Allows to obtain thicker films with a great chemical resistance and a very high hardness for highly demanding finishes. Ideal for high traffic areas. It is very important to seal previously with the Hydroprimer or Hard Sealant to prevent the product from altering the colour of the microcement and have perfect finishes without irregularities. Suitable for indoor and outdoor applications. Does not yellow.

Consumption: 8 - 9m²/L

Proportion: 25% (4L comp "A" + 1L comp "B")

Finish: gloss, satin and matt

Volume: 4L + 1L



MAXIPUR 50%

Two-component solvent-based aliphatic acrylic polyurethane varnish. It stands out for its excellent hardness, very high chemical resistance and non-yellowing in exterior applications.. Possess **lower viscosity than Maxipur 25%**, great penetration and adhesion on various substrates. Suitable for high traffic systems due to its high resistance to friction and excellent surface hardness. It is very important to seal previously with Hydroprimer or Hard Sealant to prevent the product from altering the colour of the microcement and to have perfect finishes without irregularities. Suitable for indoor and outdoor applications.

Consumption: 10m²/L

Proportion: 50% (4L comp "A" + 2L comp "B")

Finish: gloss, satin and matt

Volume: 4L + 2L



MAXIPUR 100%

Two-component solvent-based aliphatic acrylic polyurethane varnish. Specially designed for surfaces with extreme traffic. **Very low viscosity material**, highly **impermeable and resistant to chlorine and bleach**. Contains a high amount of solids. Specially indicated as **protection in immersion or sealer for swimming pools and ponds**, since it provides to the varnished substrates (microcement, wood, etc.) an extreme hardness and a high impermeability. It also stands out for its application without irregularities. Does not cause orange peel effect or kneeling. Possess high planimetry even when applied with a roller. It is recommended to apply previously Hydroprimer. Suitable for indoor and outdoor applications.

Consumption: 12m²/L

Proportion: 100% (4L comp "A" + 4L comp "B")

Finish: gloss, satin and matt

Volume: 4L + 4L



POLYSHIELD

Polyshield is a two-component polyaspartic self-leveling resin based on aliphatic acrylic polyurethane. It has a high viscosity and a high solids content which provides the surfaces with an **extreme sealing and covering capacity against water**. A film with **high chemical resistance and very high hardness can be obtained with a single layer**. Excellent resistance to UV rays, zero yellowing. Ideal for extreme traffic, humid areas and for exterior and interior use.

Consumption: 4m²/L

Proportion: 100% (4L comp "A" + 1,6L comp "B")

Finish: gloss.

Volume: 4L + 1,6L

69



# **SPECIALTIES**

RETAIL DESIGN



## PRIMER CRAQUECEM

Water-based resin that acts as a primer for Craquecem coating. It can be coloured so that when the Craquecem cracks, the colour chosen for the Primer Craquecem can be seen in the crack opening.

It is essential to apply this product for the Craquecem to crack.

Consumption: 0,2L/m<sup>2</sup>

Volume: 1L



## CRAQUECEM

Waterproof coating in ready-to-use paste format. Creates aesthetic finishes with cracked effect, imitates surfaces deteriorated or aged by the passage of time. A previous application of Primer Craquecem is required.

Excellent adhesion to an infinite number of substrates. The primer can be coloured, so that when the cracking effect is created, the colour will appear in the cracks. Likewise, the mortar can also be coloured if desired.

Consumption: 2Kg/m<sup>2</sup>

Volume: 5Kg

Suitable for:



Vertical  
surfaces



Floors







## microterrazzo RIAZZA

74 The Microterrazzo Riazza collection is composed of coarse-grained microcement (<0.4mm) mixed with **natural coloured flakes**, called **Riazza**. Only available for the Microdur line.

Suitable for both indoor and outdoor applications.

This collection set in the 70s revives the past: re-converting vintage into contemporary. The Microterrazzo is an example of this... Never say never.

Consumption: 2Kg/m<sup>2</sup>

Finishes: Wide chromatic variety and possibility of multiple combinations

Volume: 22Kg

Suitable for:



Vertical  
surfaces



Floors

Properties:



UNE EN 13813  
CT-C40-F10



## microterrazzo CRYSTAL

The Microterrazzo Crystal collection is composed of coarse-grained microcement (<0.4mm) mixed with **crystals and minerals** called **Crystal**.

Available for the Microdur and Microrock lines.

In Cemher we not only take care of the aesthetics of the coating but also its performance, so we manufacture this collection for the Microdur and Microrock lines. This way it can be applied in multiple surfaces, from walls and high traffic floors to swimming pools. Suitable for both indoor and outdoor applications.

Consumption: 2Kg/m<sup>2</sup>

Finishes: Wide chromatic variety and possibility of multiple combinations.

Volume: 22Kg - Microdur  
12Kg - Microrock + hardener

Suitable for:



Vertical  
surfaces



Floors

Properties:



UNE EN 13813  
CT-C40-F10







## miconature

76

The Micronature collection is composed of coarse-grained microcement (<0.4mm) mixed with **recycled particles** (seeds, wood, straw, etc.). Micronature presents a large number of effects, all of them very different from each other, but with a common denominator: they all evoke nature.

The final aesthetic result is an atmosphere of well-being, delicacy and tranquillity in perfect harmony with any style of decoration or architecture.

We manufacture this collection for the Microdur line. This way it can be applied on multiple surfaces, walls and floors. Suitable for both indoor and outdoor applications.

Consumption: 2Kg/m<sup>2</sup>

Finishes: Wide chromatic variety and possibility of multiple combinations.

Volume: 22Kg

Suitable for:



Vertical surfaces



Floors

Properties:



UNE EN 13813  
CT-C40-F10



77



# **SPECIALTIES**

METALLICS AND OXIDES







## METALGLAZE

80 Range of ready-to-use metallic glazes to create subtle metallic effects. It is applied in thin layers of metallic paint. In this way the background colour is combined with the top metallic glaze.

Consumption: 25m<sup>2</sup>/L

Finishes: Gold, Silver and Bronze.

Volume: 1L



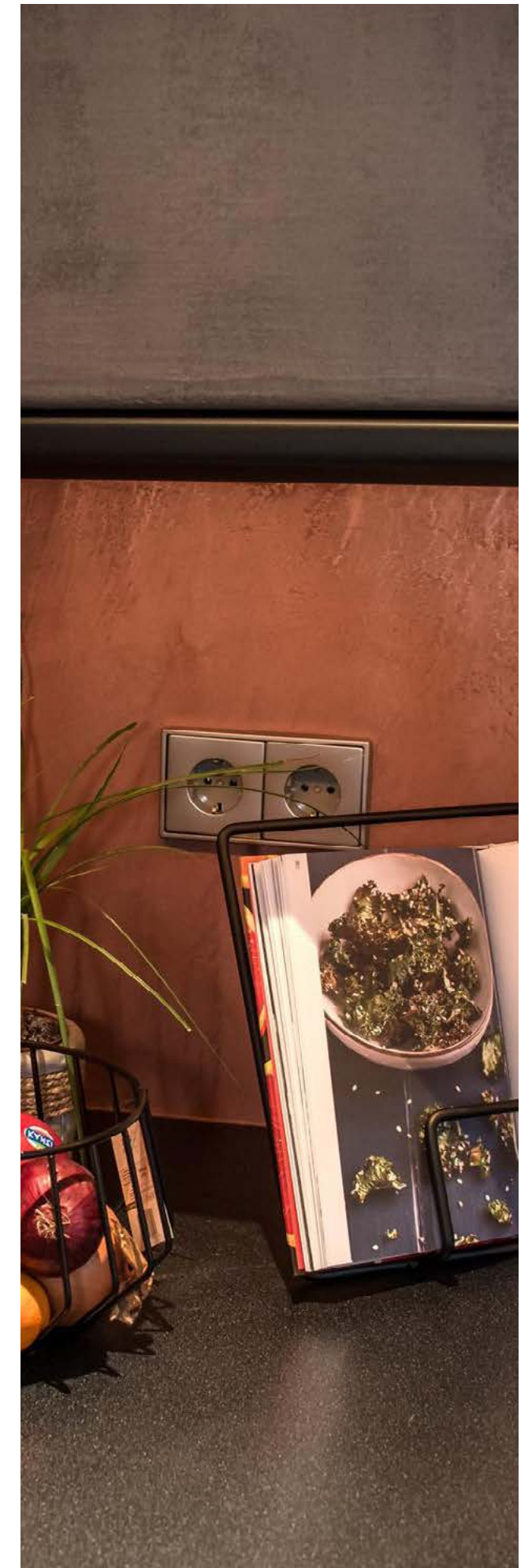
## METALPAINT

Highly decorative metallic paint for interior and exterior use. Easy application in one coat. Excellent resistance to weathering, aging and cleaning. Suitable for all kind of surfaces, such as: wood, iron, stone, etc.

Consumption: 10m<sup>2</sup>/L

Finishes: Gold, Silver and Copper.

Volume: 1L







## metalresin

### WALLS

82 Two-component decorative metallic coating for Vertical surfaces in interiors and exteriors. Made from selected metal alloy powders and water based resins. Metalresin walls is specially developed to be polished or to be oxidized.

Consumption: 1,5Kg/m<sup>2</sup>

Finishes: Gold, Silver, Bronze and Copper

Volume: Gold, Bronze or Copper: 3Kg + 750ml  
Silver: 2,5Kg + 1L

Suitable for:



Vertical  
surfaces



## metalresin

### FLOORS

Decorative three-component metallic coating for Vertical surfaces and horizontal surfaces both indoors and outdoors. Made from selected metal alloy powders, two-component epoxy resin compounds and special rheological additives to ensure excellent workability, adhesion and high hardness.

The application of Metalresin floors allows to obtain unique textures, enhancing the original and exclusively treated surfaces, transforming them into real metal.

Metalresin floors is specially developed to be polished or to be oxidized.

Consumption: 1,5Kg/m<sup>2</sup>

Finishes: Gold, Silver, Bronze and Copper

Volume: Gold, Bronze or Copper: 3Kg + (0,5L + 0,2L)  
Silver: 2,5Kg + (1L + 375ml)

Suitable for:



Vertical  
surfaces



Floors



83





## micrometal

84 Innovative, highly decorative, two-component, water-proof coating.

It can be oxidized and polished, highlighting the beauty of the metal. The white base allows to be pigmented, being able to achieve an infinity of different colours. Specially indicated for decoration of walls and furniture. Also for outdoor and indoor wet areas, such as showers.

Consumption: 1,5Kg/m<sup>2</sup>

Finishes: Gold, Silver, Bronze, Copper and Steel

Volume: 10Kg

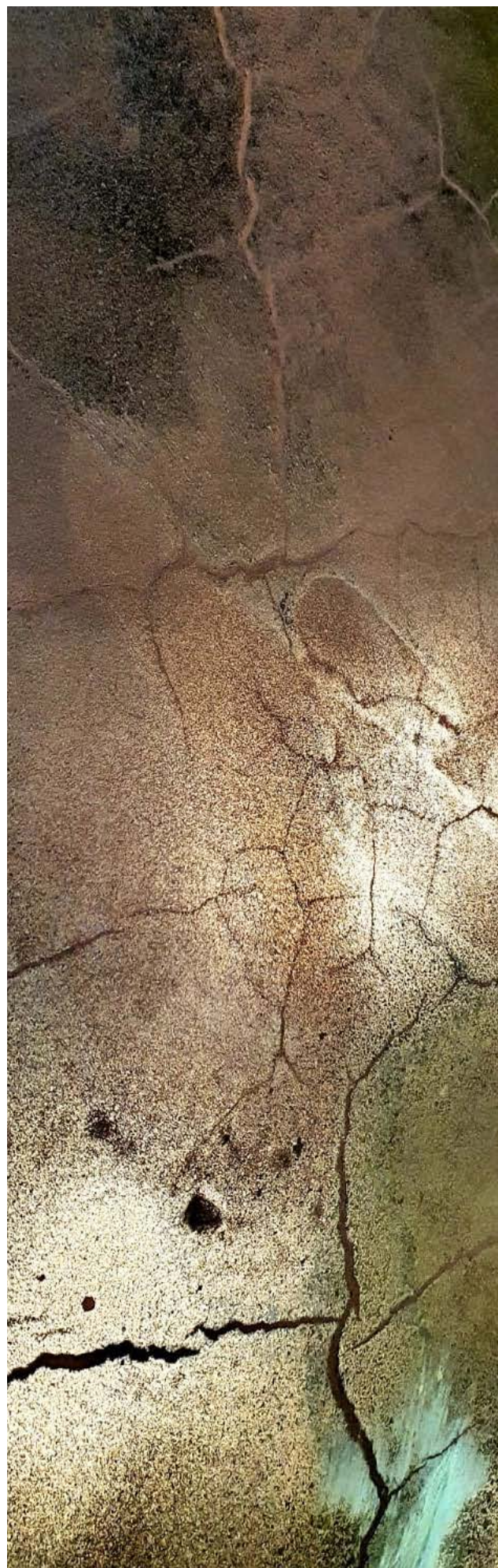
Suitable for:



Vertical surfaces



Floors



## oximetal

Two-component corten steel coating for vertical and horizontal surfaces in interiors and exteriors applications. Made from steel powders and water-based resins. Oximetal is specially developed to be oxidized but can also be polished.

Consumption: 1,5Kg/m<sup>2</sup>

Finish: Steel

Volume: 3Kg + 750ml y 10Kg + 5L

Suitable for:



Vertical surfaces



Floors

Properties:



Antislip



85





## Oxidher ACTIVATOR

86

The Oxidher Activator applied on Oxymetal, Metal-resin, Metalplus or Micrometal, allows the creation of the corten steel system. Any metallic surface can be oxidized in less than five minutes. Its base has been specially designed to oxidize metallic particles: steel, copper, gold, bronze and others.

Consumption: 13 - 15m<sup>2</sup>/L

Colours: Red, Green, Blue, Nordic Green, Nordic Blue and Nordic Copper Yellow

Volume: 1L



## Oxidher SEALER

As its name suggests, it is a transparent, water-based protective sealer for the protection of surfaces treated with Oxidher finishes. It can be applied both indoors and outdoors.

Its special formulation creates a thin film-forming barrier that reduces the normal crumbling of oxidised surfaces and increases water resistance.

Consumption: 10m<sup>2</sup> /L

Volume: 1L y 5L



87





# **SPECIALTIES**

DECORATIVE SELF-LEVELLING  
COATING AND CONTINUOUS  
TERRAZZO



## decolevel floor.

90 Decorative self-levelling polymeric mortar. Formulated in white base so that it can be coloured in any colour. High technical performance, to apply from 2 to 7 mm thick, for the realization of continuous pavements for decorative use. Its appearance is warm and innovative in the interiors, resulting most advantageous in homes and stores and bringing them an avant-garde look.

Classified according to UNE-EN 13813 as CT-C40-F10.

Consumption: 1,7Kg/m<sup>2</sup>

Colours: 40 colours from our colour chart

Proportion: 20Kg of Decolevel Floor + 4,6L of water

Volume: 20Kg

Suitable for:



Floors

Properties:



UNE EN 13813  
CT-C40-F10



## decolevel *fast*.

Decorative self-levelling mortar with the same properties as Decolevel Floor.

The difference between one and the other is that Decolevel Fast has a rougher finish and is only available in ash gray colour.

In addition, it has a faster drying time of 4 to 5 hours.

Consumption: 1,7Kg/m<sup>2</sup>

Colour: Ash Gray

Proportion: 20Kg of Decolevel fast + 4,6L of water

Volume: 20Kg

Suitable for:



Floors

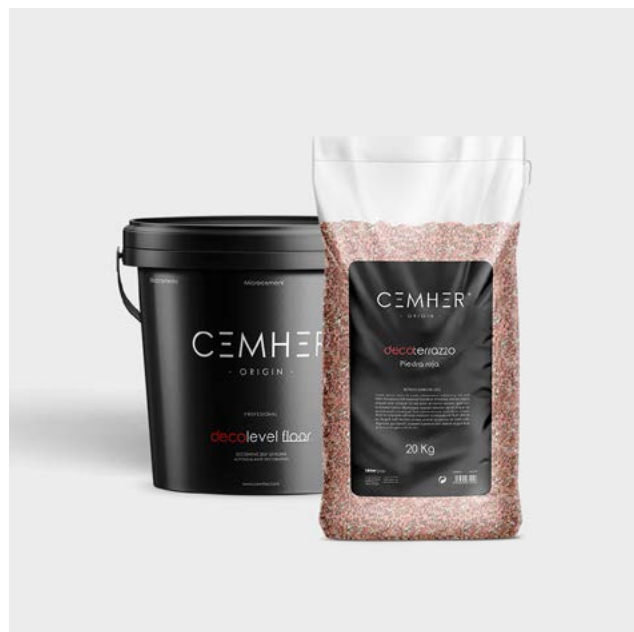
Properties:



UNE EN 13813  
CT-C40-F10







## decoterrazzo

92 Two-component polymeric self-levelling mortar. Its specially formulated white base can be tinted to any colour and incorporates stones and crystals.

High technical performance, to apply from 2 to 7mm thick, for the realization of continuous pavements for decorative use. Its appearance is warm and innovative in the interiors, resulting most advantageous in homes and stores and bringing them an avant-garde look.

Consumption: 10Kg/m<sup>2</sup>

Finishes: multitude of possibilities and chromatic mixtures

Proportion: 20Kg of Decolevel Floor + 20Kg of decoterrazzo ( stones or crystals) + 4,5L of water.  
"For 10mm thick"

Volume: 20Kg + 20Kg

Suitable for:

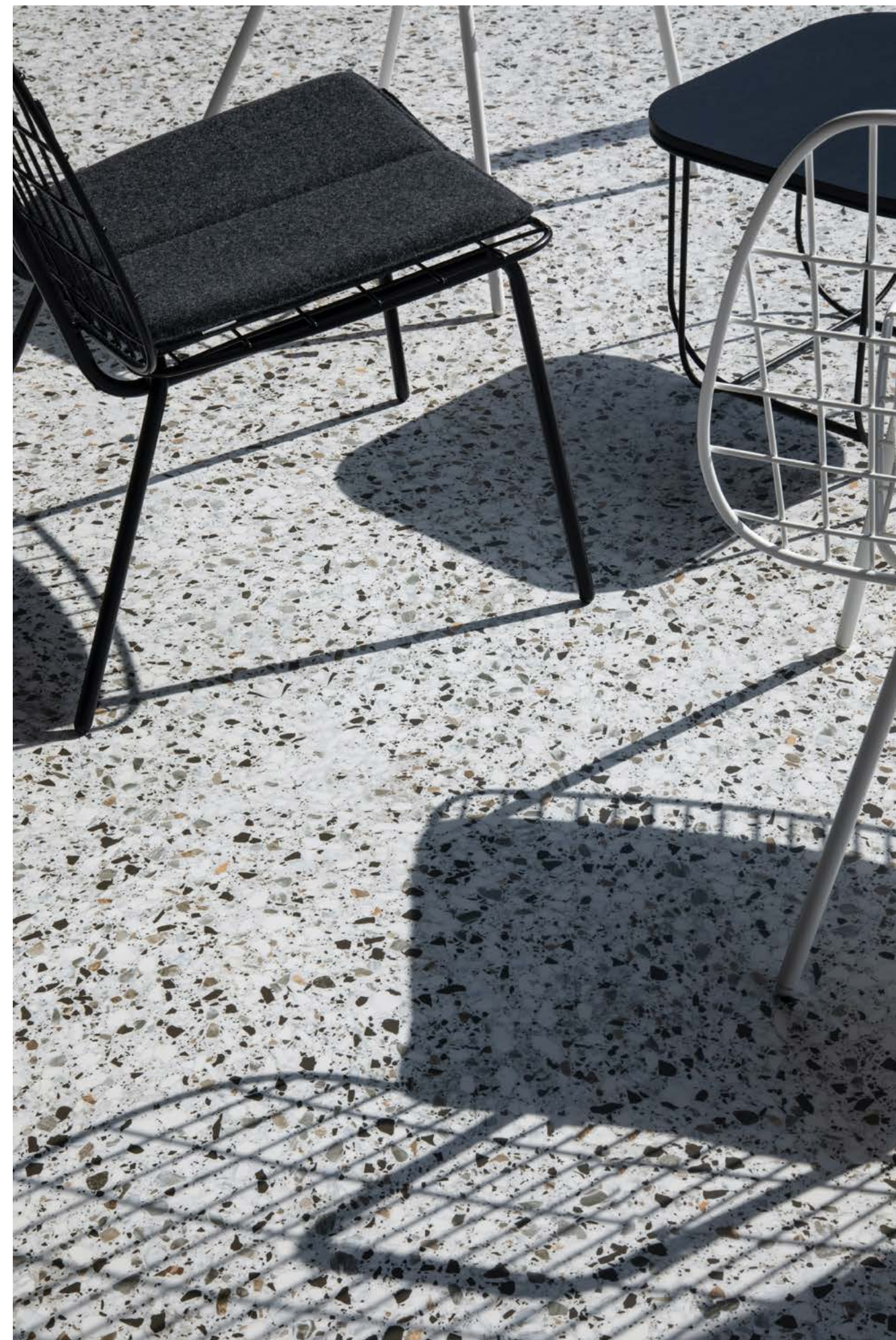
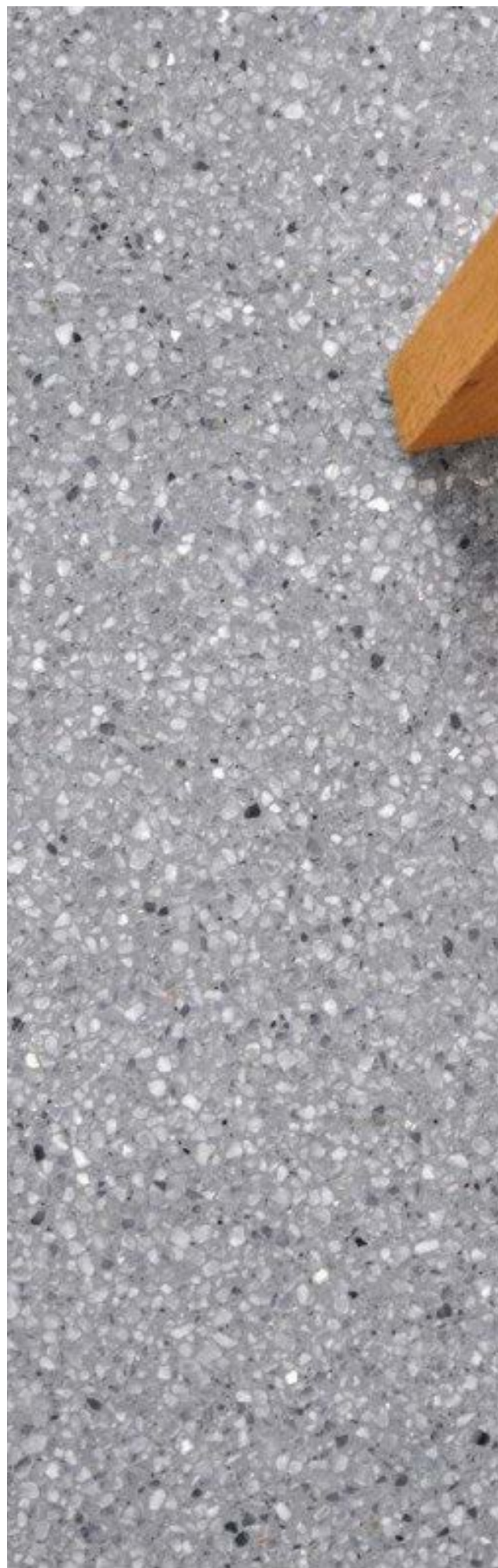


Floors

Properties:



UNE EN 13813  
CT-C40-F10

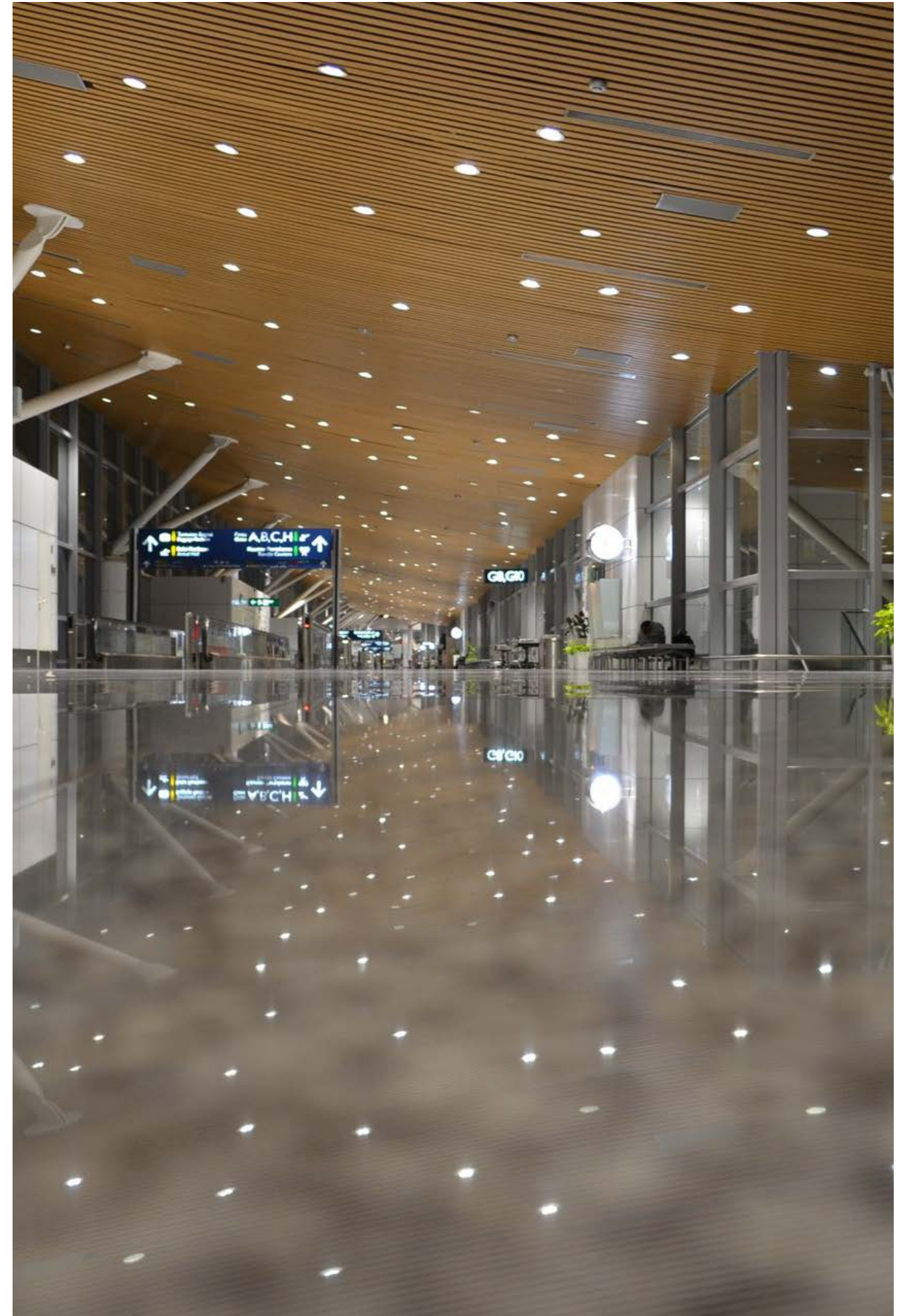


93



# SPECIALTIES

## EPOXY RESINS







## AQUAEPOX

96

Two-component water-based epoxy paint for floors, walls and ceilings. For interior applications in industrial facilities, garages, basements, warehouses, schools, etc.

Suitable for applications on cement, concrete, plaster, microcement, mortar, wood, iron, etc. Good chemical, mechanical and scratch resistance. Impermeable to water vapor. Does not contain solvents. Can be applied even with a certain degree of humidity in the substrate (concrete humidity below 8%). Not suitable for exterior use.

Consumption: 6 - 7m<sup>2</sup>/L

Finish: satin

Application: roller, brush or sprayer

Volume: 5L + 2L



## EPOXY 3D FLOOR

Transparent 100% solids epoxy resin, to apply in pavements in thicknesses of 1-2mm to create 3D effects. It has great planimetry and good fluidity. Its transparency makes it ideal as a 3D floor finish, or for covering countertops and floors. It can be tinted with our natural and metallic pigments.

Extremely durable, capable of withstanding intensive use on high traffic pavements

Consumption: 1m<sup>2</sup>/L

Finish: gloss

Application: notched trowel

Volume: 1L + 0,5L or 4L + 2L



## EPOXY CASTING

Transparent 100% solids epoxy resin for casting and thick encapsulations. Formulated to control resin curing, it can be applied in thicknesses greater than 5 cm. Its transparency makes it ideal for applications in "river type" tables, for jewelry and costume jewelry, among other sectors. Can be dyed with our natural and metallic pigments.

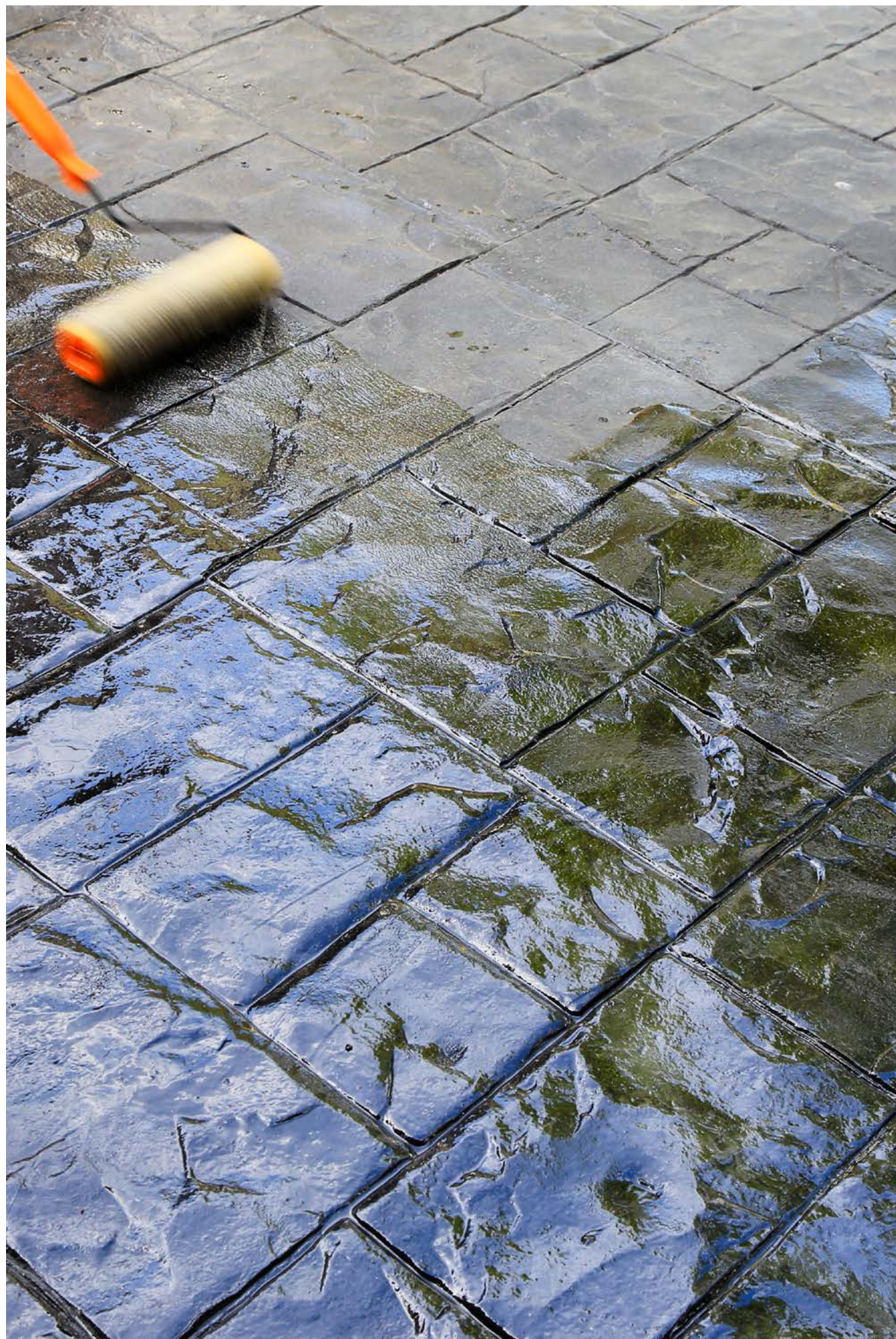
Consumption: 1m<sup>2</sup>/L

Finish: gloss

Volume: 1L + 0,4L o 5L + 2L

97





# **SPECIALTIES**

## MAINTENANCE





## IMPRES AQUA 24

100

One-component waterborne acrylic finish for printed concrete floors and other substrates. Spreads uniformly leaving a completely homogeneous film. Revives the colours of the pavement and prevents premature evaporation of the mixing water.

Consumption: 0,2Kg/m<sup>2</sup>

Finish: gloss

Application: roller or sprayer

Volume: 25L and 5L



## IMPRES ULTRA

Waterproof acrylic coating that generates a glossy or matt film on concrete pavements. Specially indicated for printed concrete pavements that require a high protection against wear. Its special formula is developed to extend the life of the pavements, enhancing the colour of the print, providing greater resistance to scuffing and substrateeing moderate traffic. The matt finish provides the same protection, but leaving the natural appearance of the concrete visible.

Consumption: 0,25Kg/m<sup>2</sup>

Finish: gloss

Application: roller or sprayer

Volume: 25L and 5L



## STAMPED RESTORE

101

Two-component, cement-based paint. It consists of special aggregates of high hardness and resistance, plus a coloured mixing resin. Compatible with all types of surfaces. It is adherent, breathable and of great hardness. It can be supplied with a thicker particle size to create a non-slip surface. Once the Stamped Restore has dried, Impres Aqua 24 should be applied to protect the cement-based coating. This water-based finish sealer provides greater surface hardness to the cementitious paint.

Classified according to UNE-EN 13813 as CT-C40-F10.

Consumption: 0,5Kg/m<sup>2</sup>

Proportion: 10Kg Stamped restore + 10L de resina.

Application: roller

Volume: 10Kg + 10L

Suitable for:



Vertical surfaces



Floors



UNE EN 13813  
CT-C40-F10



Antislip



## FLOOR PROTECT

Floor protect is a product specially developed for the maintenance and protection of microcement. Water-proofs, revives and protects previously varnished surfaces. Restores light scratches on the floor. Does not contain waxes, so it does not scratch with footsteps and does not disappear in a short period of time. By simply applying and spreading it with a mop, it protects floors for long periods of time.

Consumption: 12m<sup>2</sup>/L

Volume: 5L





# CEMHER®

- ORIGIN -

İTHALATÇI FİRMA

## MUP

**Mupo Yapı Pazarlama Ankastre İnşaat İthalat ve İhracat Ltd. Şti.**

Merkez : İzzet Paşa Yeniyol Caddesi No:3 Kat:32 No:3 Nurol Tower Şişli /

İSTANBUL

Showroom : Ege Mahallesi Alparslan Türkeş Sokak Özsürücü Suit A Blok

No:2-AC Kuşadası / AYDIN

[info@mupo.com.tr](mailto:info@mupo.com.tr)

[www.mupo.com.tr](http://www.mupo.com.tr)

0 256 614 7 444

**kilnher**group®

C/ Llanterners 44,  
P. Ind. La Figuera 46970  
Alaquas - Valencia (Spain)

+ 34 96 150 50 24      [info@cemher.com](mailto:info@cemher.com)

[www.cemher.com](http://www.cemher.com)